

Distribution and Risk Maps for Insect Pests based on Surveys Conducted in 2024

Presented by Meghan Vankosky
Agriculture and Agri-Food Canada, Saskatoon

With funding and support from*:



*List limited to current direct funders

Data provided through partnership with:

- Shelley Barkley, Amanda Jorgensen and Alberta Agriculture and Irrigation
- James Tansey, Carter Peru and Saskatchewan Ministry of Agriculture
- John Gavloski and Manitoba Agriculture
- Western Grains Research Foundation
- Sask Oilseeds
- Saskatchewan Pulse Growers
- Saskatchewan Wheat Development Commission
- Alberta Grains
- Alberta Canola Producers Commission
- Manitoba Canola Growers Association
- Manitoba Crop Alliance
- Manitoba Pulse and Soybean Growers
- Prairie Oat Growers Association
- BC Grain Producers Association
- Canola Council of Canada
- Saskatchewan Crop Insurance Corporation
- Association of Alberta Agriculture Fieldmen
- SARM Plant Health Technical Advisors (SK)
- Agronomists and **FARMERS**

**2023 and 2024 maps prepared
by Jon Williams (AAFC–
Saskatoon Research and
Development Centre).**



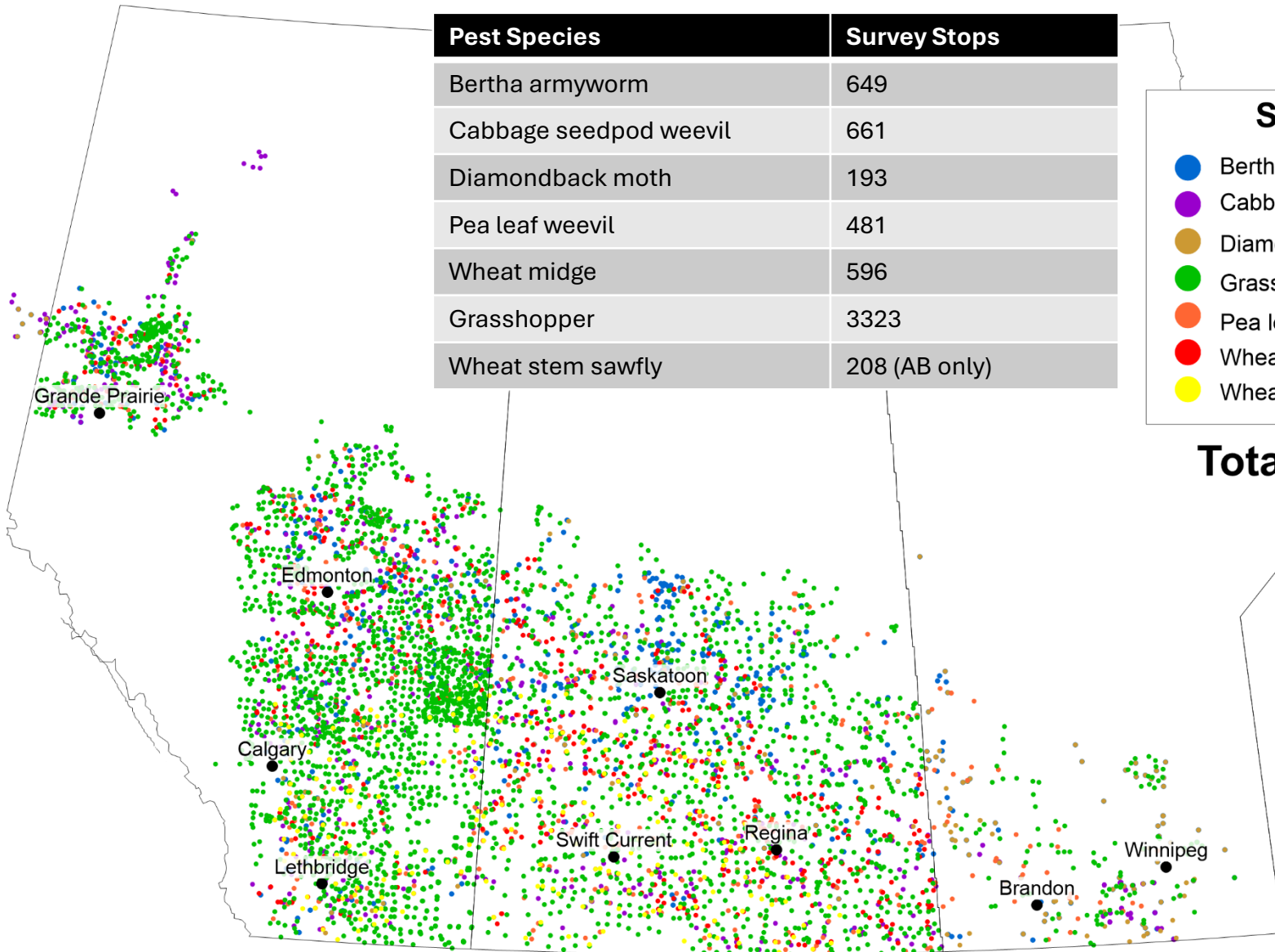
Insect Survey Stops 2024

Pest Species	Survey Stops
Bertha armyworm	649
Cabbage seedpod weevil	661
Diamondback moth	193
Pea leaf weevil	481
Wheat midge	596
Grasshopper	3323
Wheat stem sawfly	208 (AB only)

Species

-  Bertha armyworm
-  Cabbage seedpod weevil
-  Diamondback moth
-  Grasshopper
-  Pea leaf weevil
-  Wheat midge
-  Wheat stem sawfly

Total = 6111



Map by Jon Williams (AAFC Saskatoon)



Agriculture and
Agri-Food Canada

Agriculture et
Agroalimentaire Canada

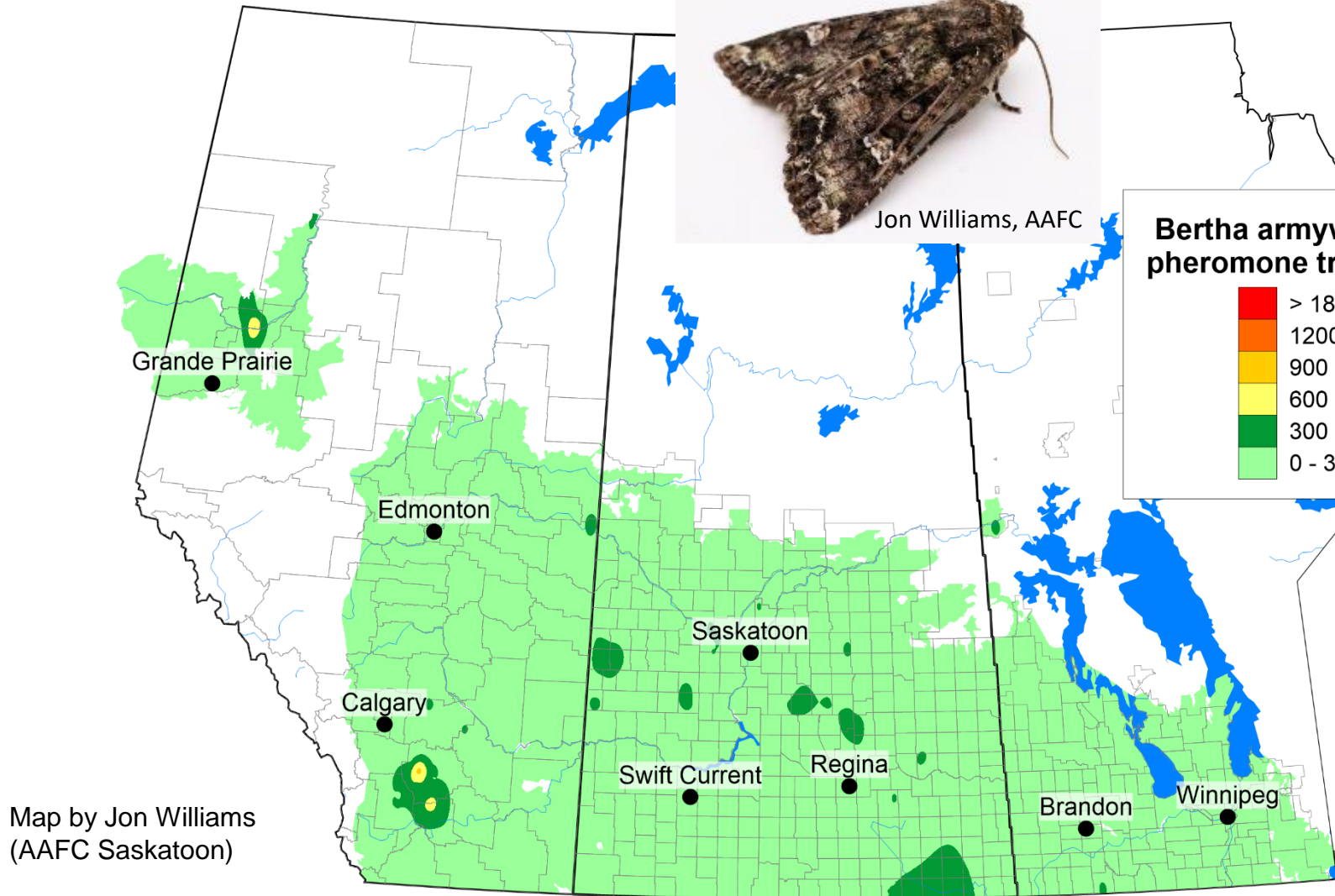
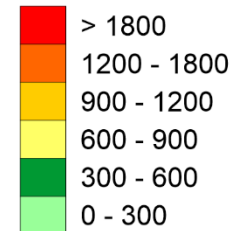


Bertha Armyworm 2024 Survey



Jon Williams, AAFC

Bertha armyworm moth pheromone trap captures



Map by Jon Williams
(AAFC Saskatoon)



Agriculture and
Agri-Food Canada

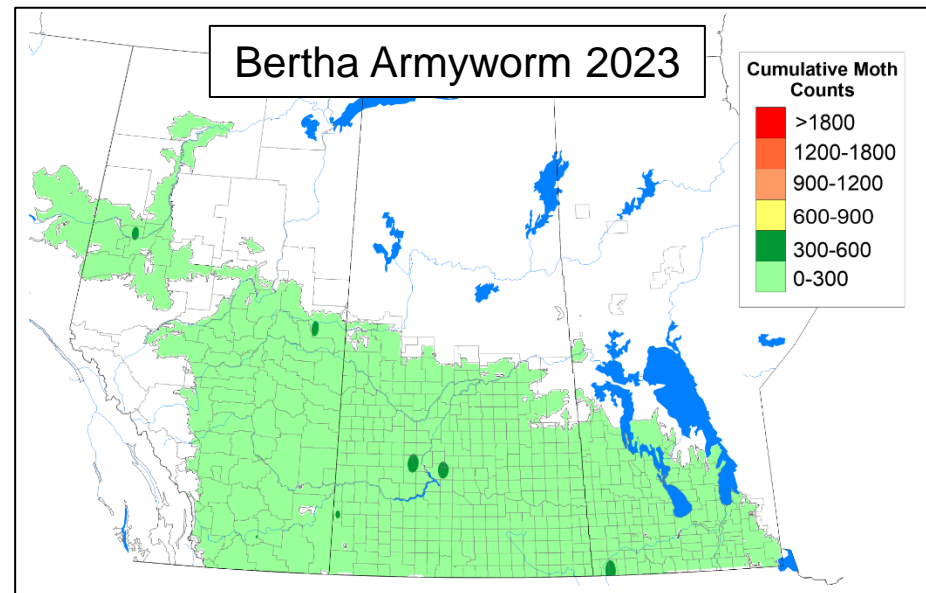
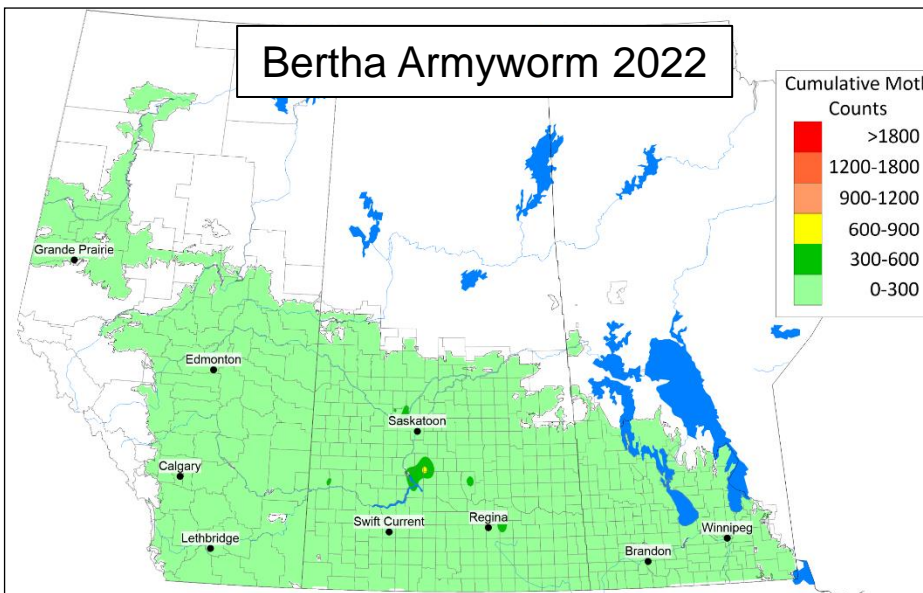
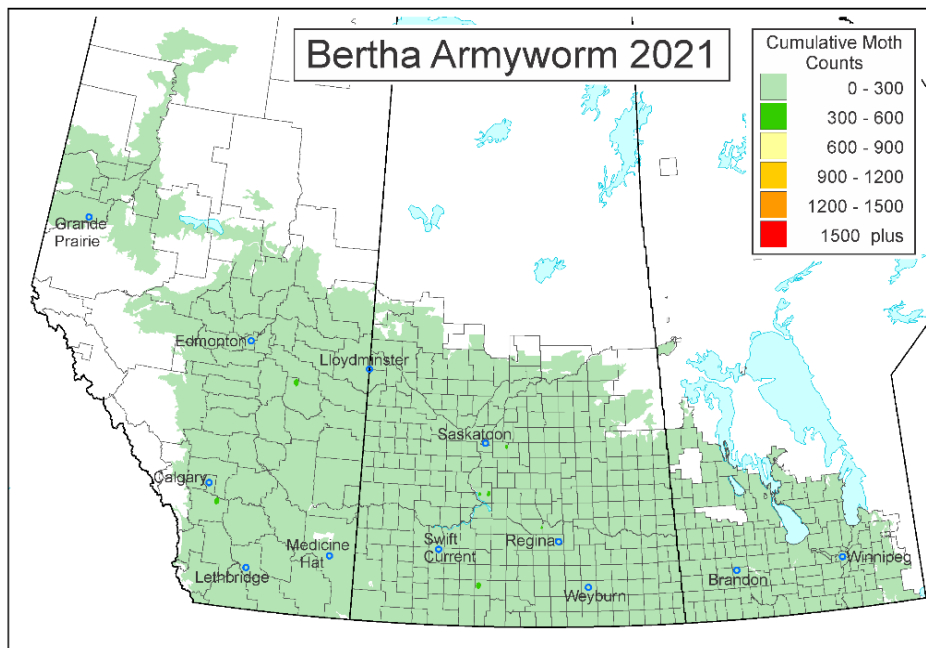
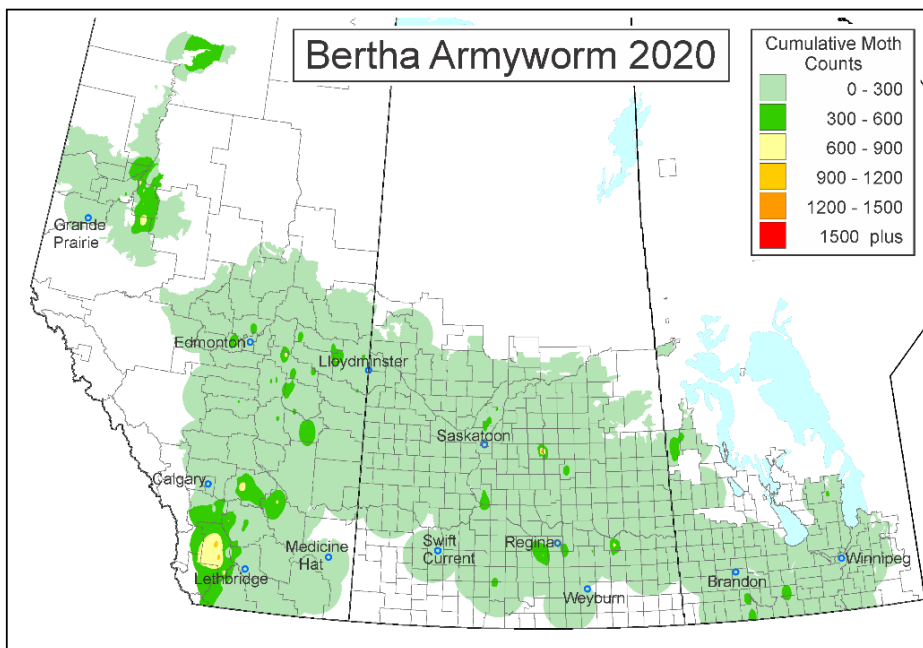
Agriculture et
Agroalimentaire Canada

Alberta

Saskatchewan

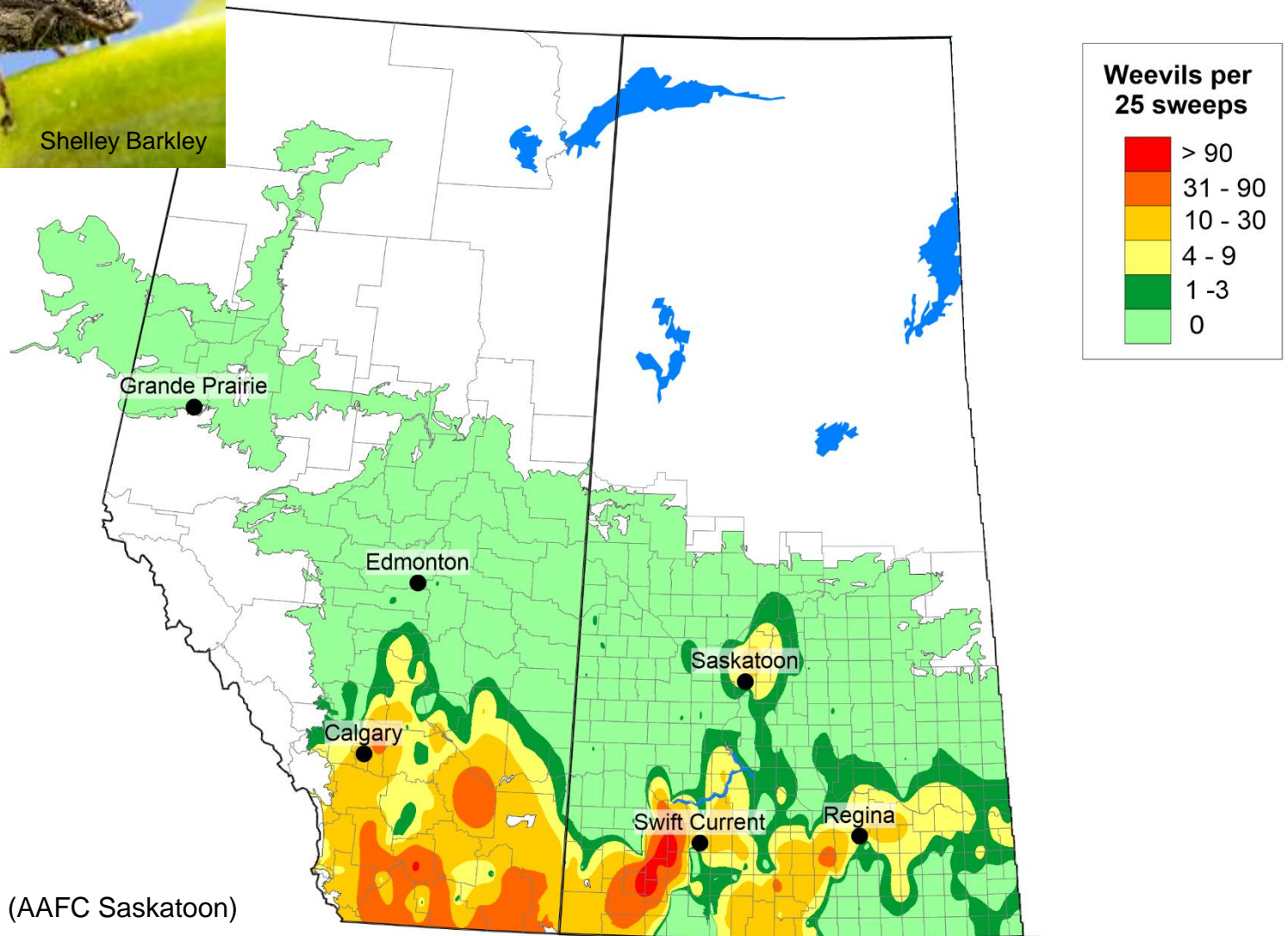
Manitoba





Maps by David Giffen (2020-21), Ross Weiss (2022) and Jon Williams (2023); AAFC-Saskatoon

Cabbage Seedpod Weevil 2024 Survey



Map by Jon Williams (AAFC Saskatoon)



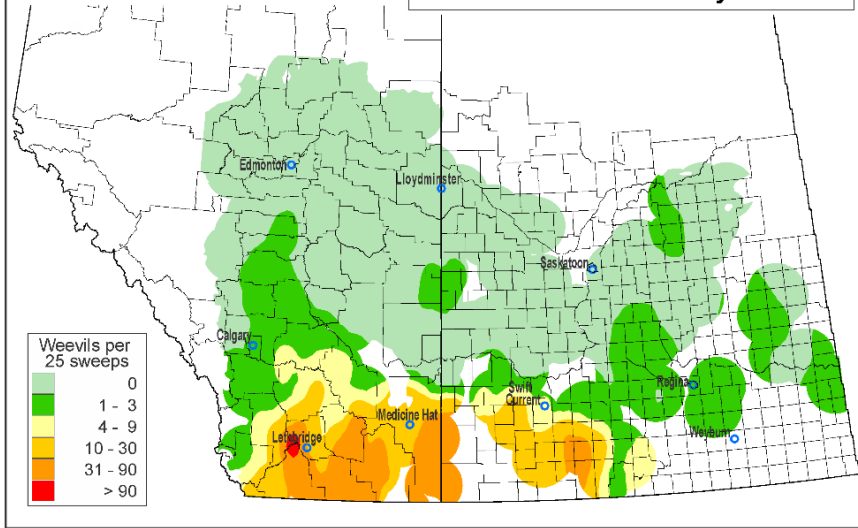
Agriculture and
Agri-Food Canada

Agriculture et
Agroalimentaire Canada

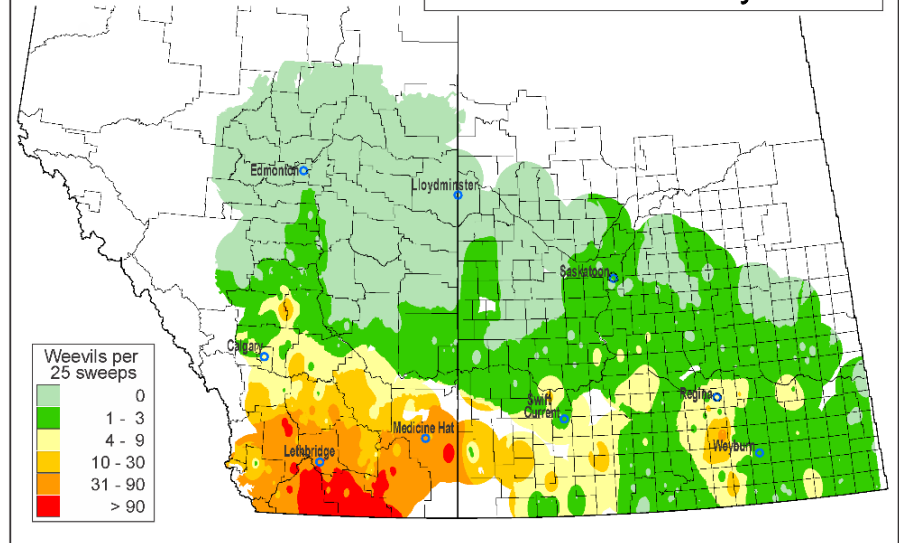
Alberta

Saskatchewan

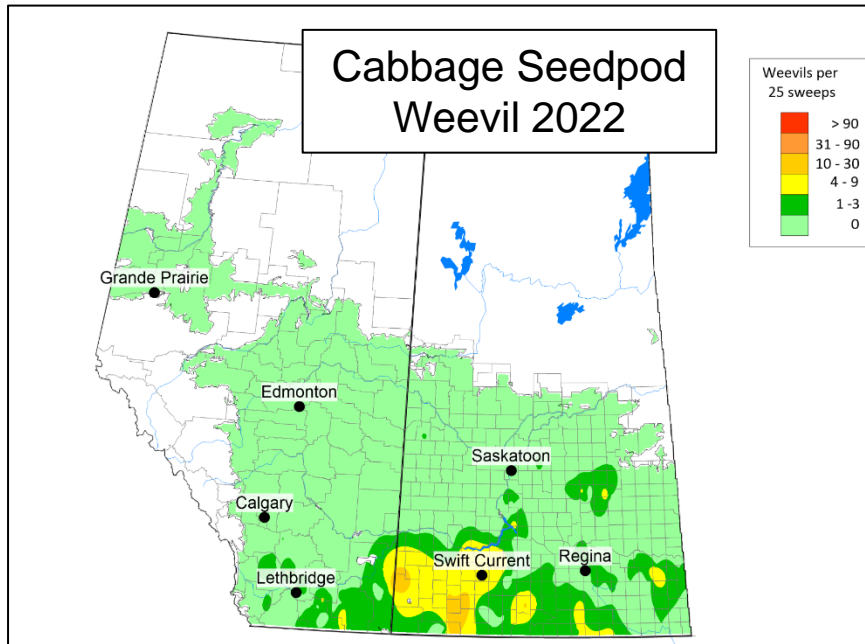
Cabbage Seedpod Weevil
2020 Survey



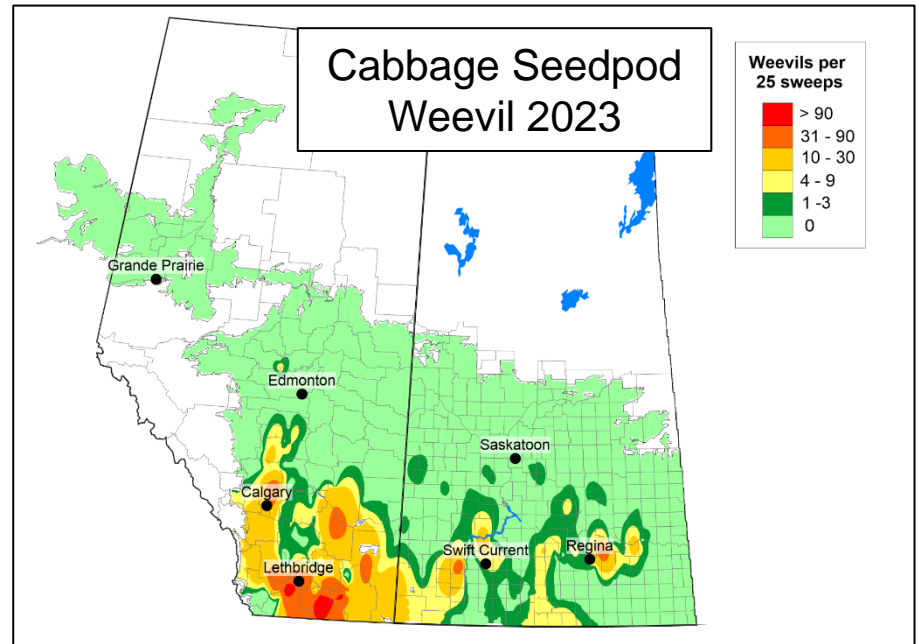
Cabbage Seedpod Weevil
2021 Survey



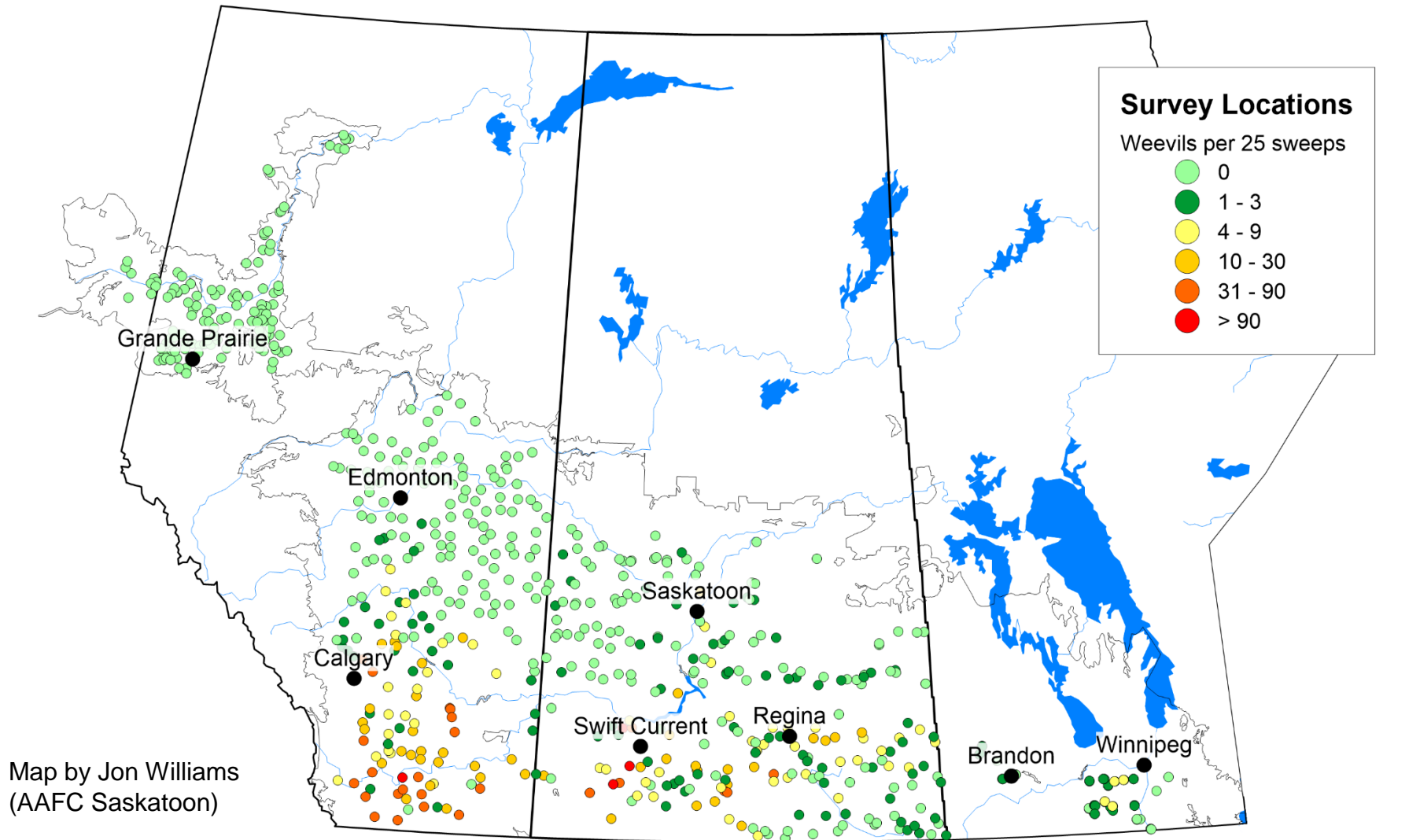
Cabbage Seedpod
Weevil 2022



Cabbage Seedpod
Weevil 2023



Cabbage Seedpod Weevil 2024 Survey



Agriculture and
Agri-Food Canada

Agriculture et
Agroalimentaire Canada

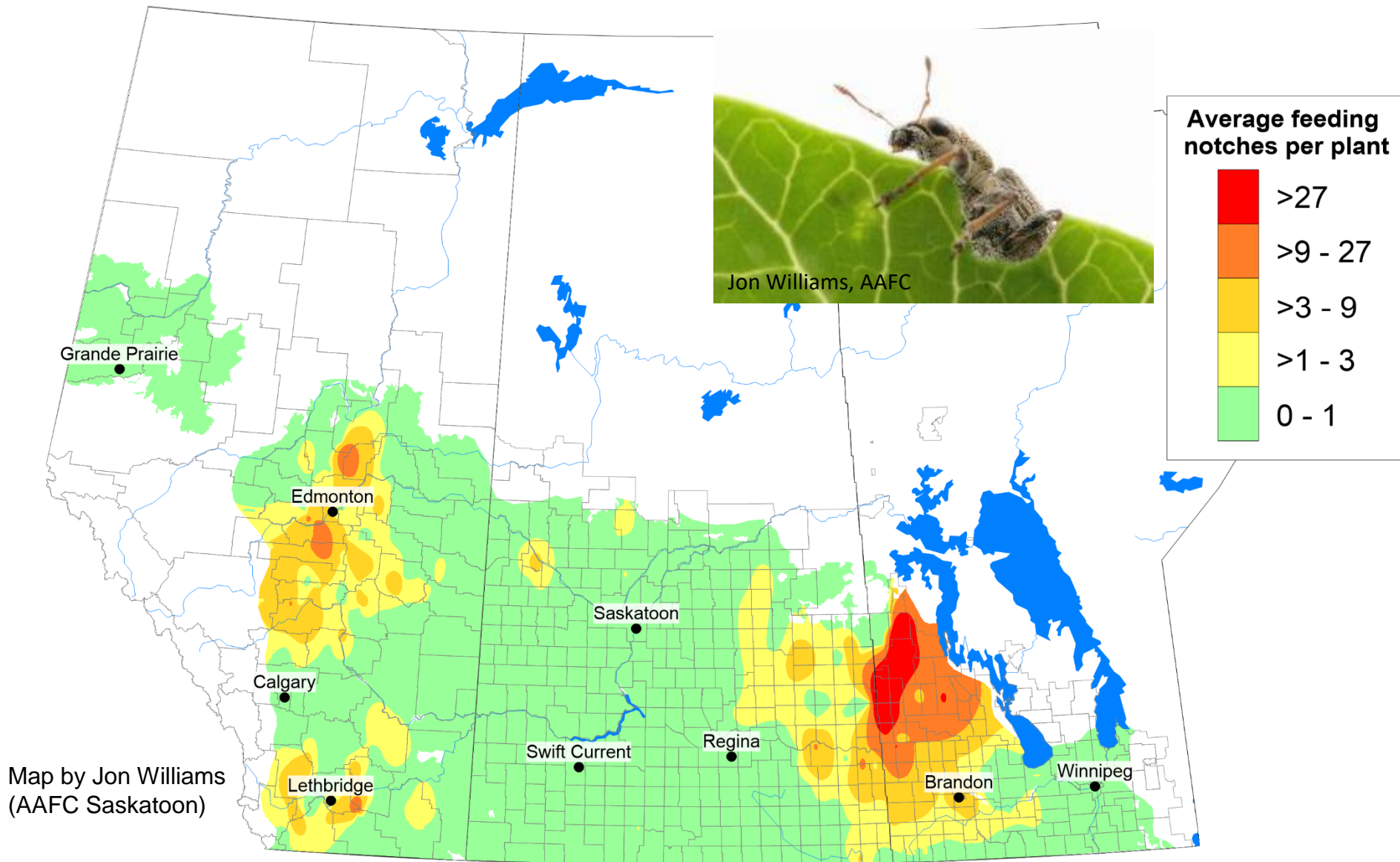
Alberta

Saskatchewan

Manitoba



Pea Leaf Weevil 2024 Survey



Agriculture and
Agri-Food Canada

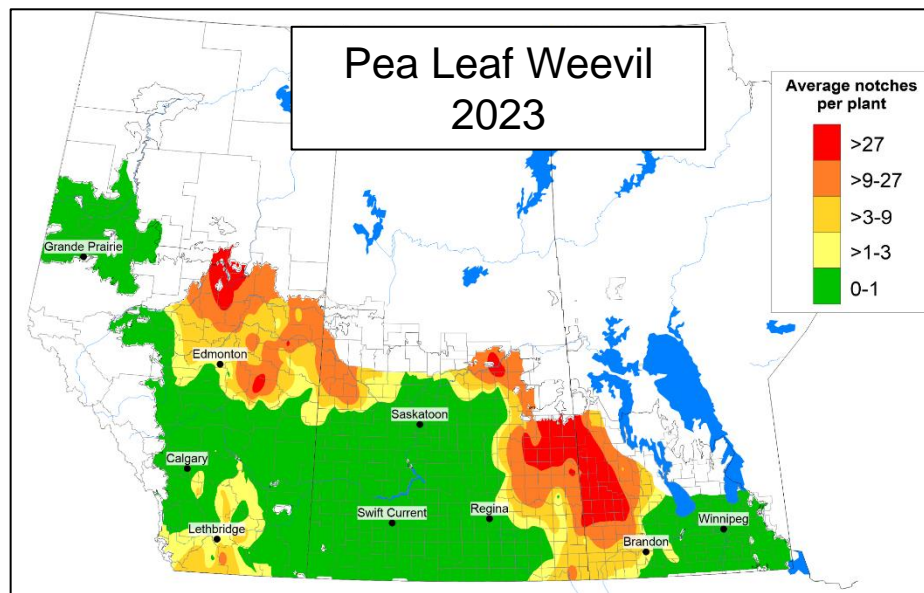
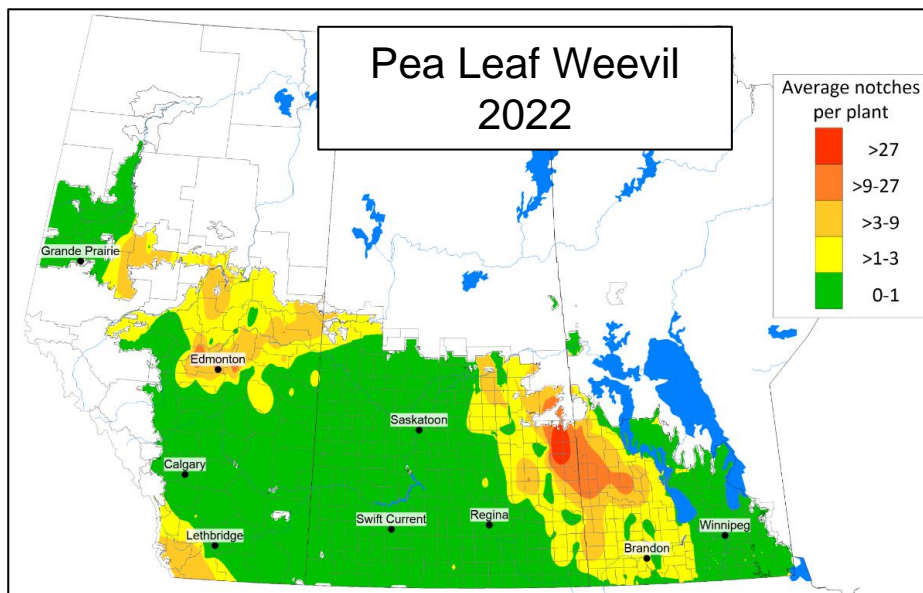
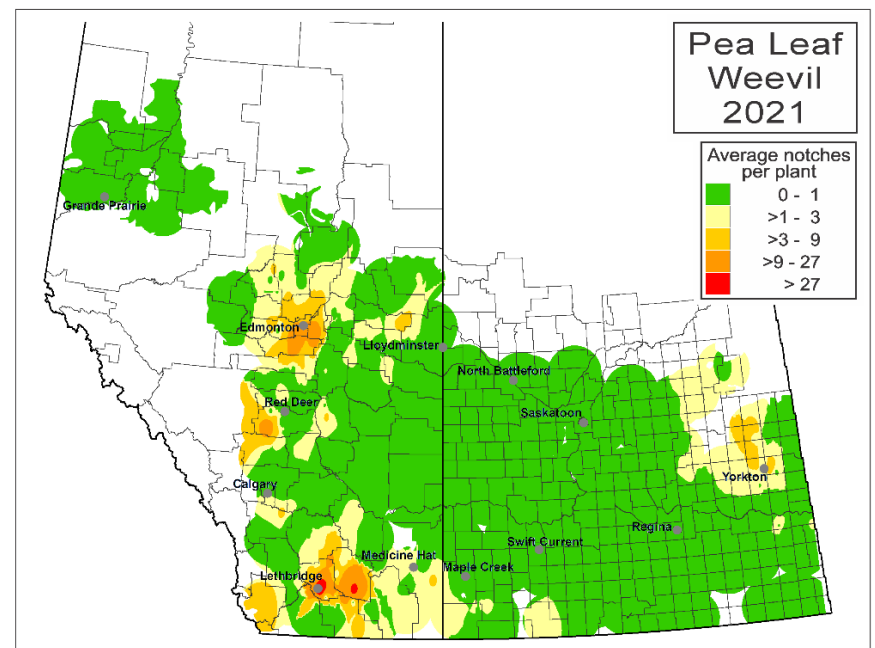
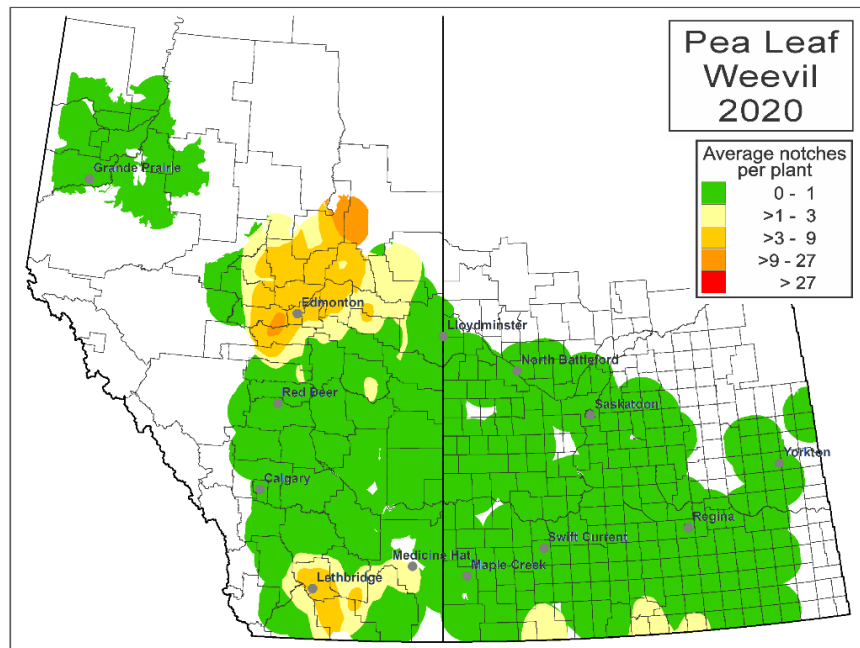
Agriculture et
Agroalimentaire Canada

Alberta

Saskatchewan

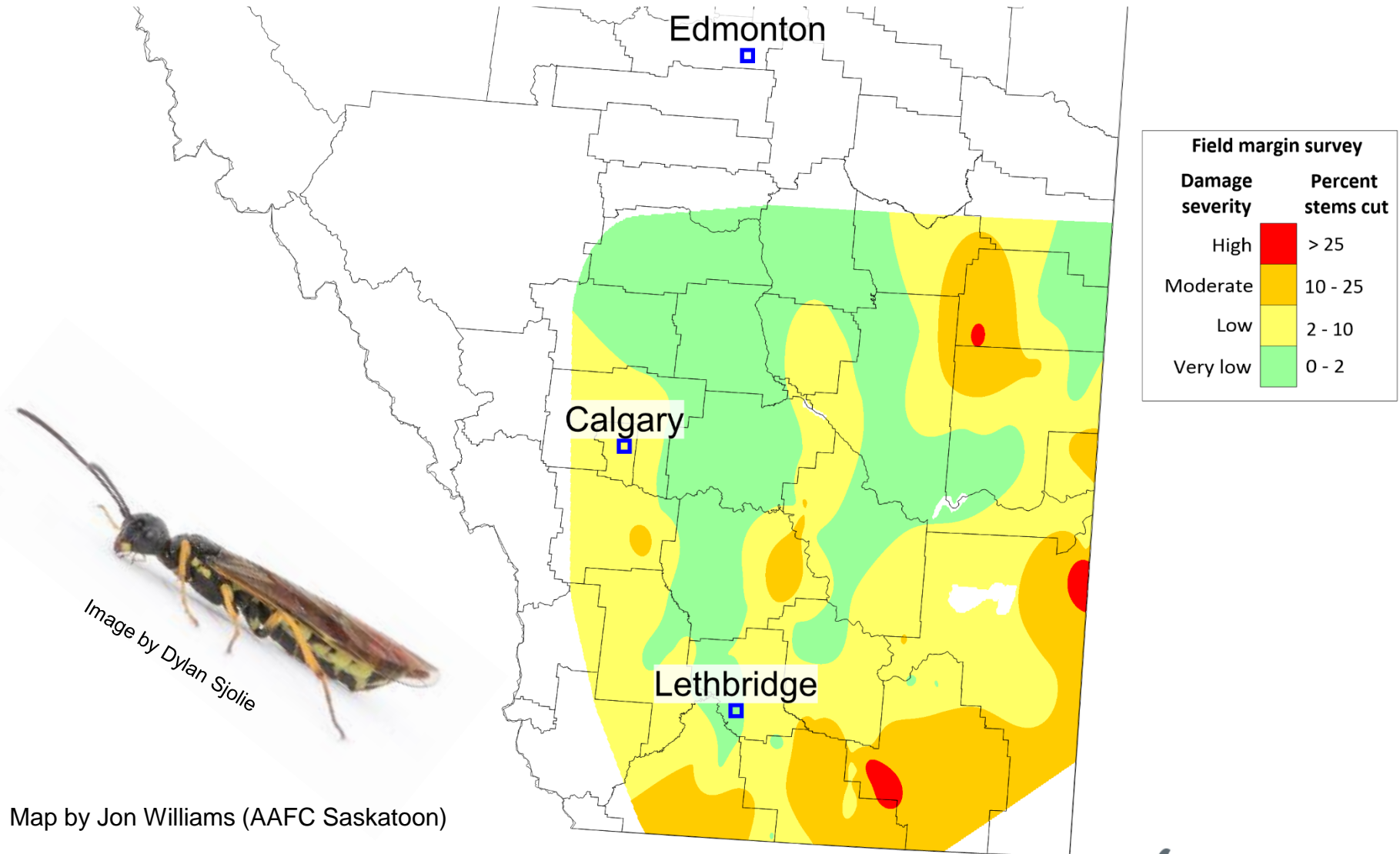
Manitoba





Maps by David Giffen (2020-21), Ross Weiss (2022) and Jon Williams (2023); AAFC-Saskatoon

Wheat Stem Sawfly 2024 Survey



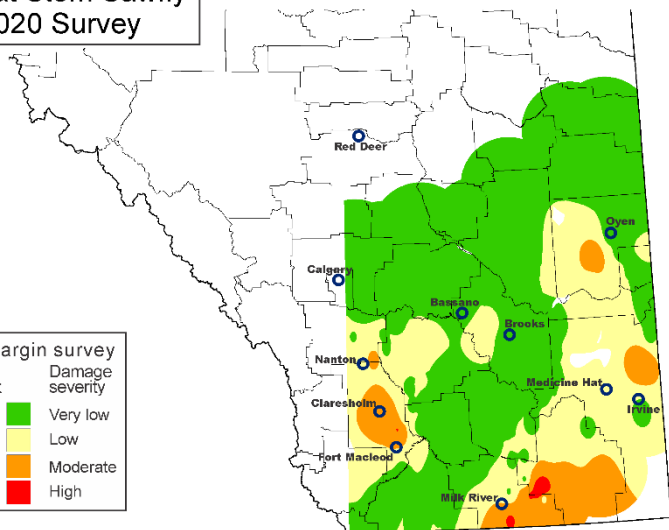
Agriculture and
Agri-Food Canada

Agriculture et
Agroalimentaire Canada



Wheat Stem Sawfly 2020 Survey

Field margin survey	
Percent stems cut	Damage severity
0 - 2	Very low
2 - 10	Low
10 - 25	Moderate
> 25	High

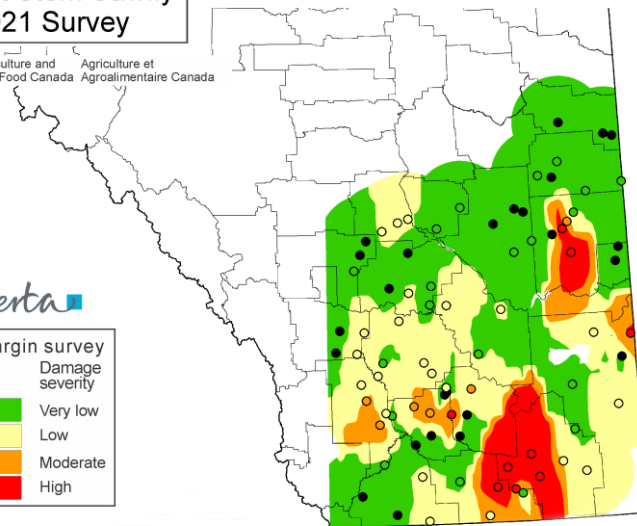


Wheat Stem Sawfly 2021 Survey

 Agriculture and Agri-Food Canada Agriculture et Agroalimentaire Canada

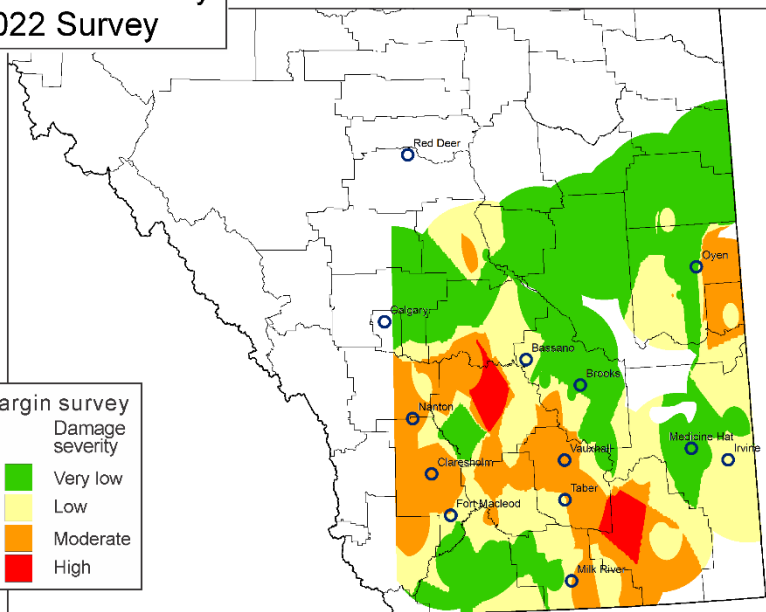
Alberta

Field margin survey	
Percent stems cut	Damage severity
0 - 2	Very low
2 - 10	Low
10 - 25	Moderate
> 25	High



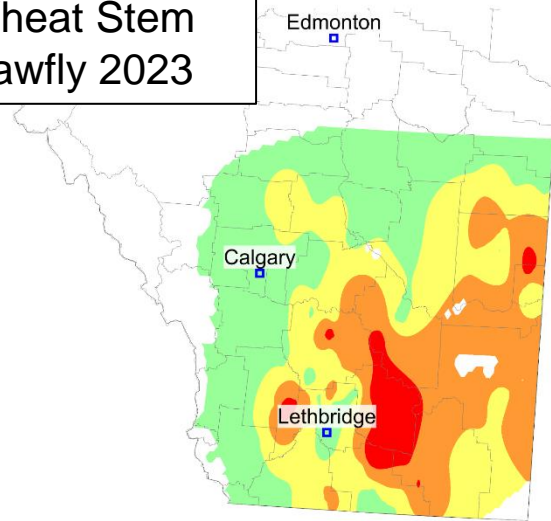
Wheat Stem Sawfly 2022 Survey

Field margin survey	
Percent stems cut	Damage severity
0 - 2	Very low
2 - 10	Low
10 - 25	Moderate
> 25	High



Wheat Stem Sawfly 2023

 Agriculture and Agri-Food Canada Agriculture et Agroalimentaire Canada

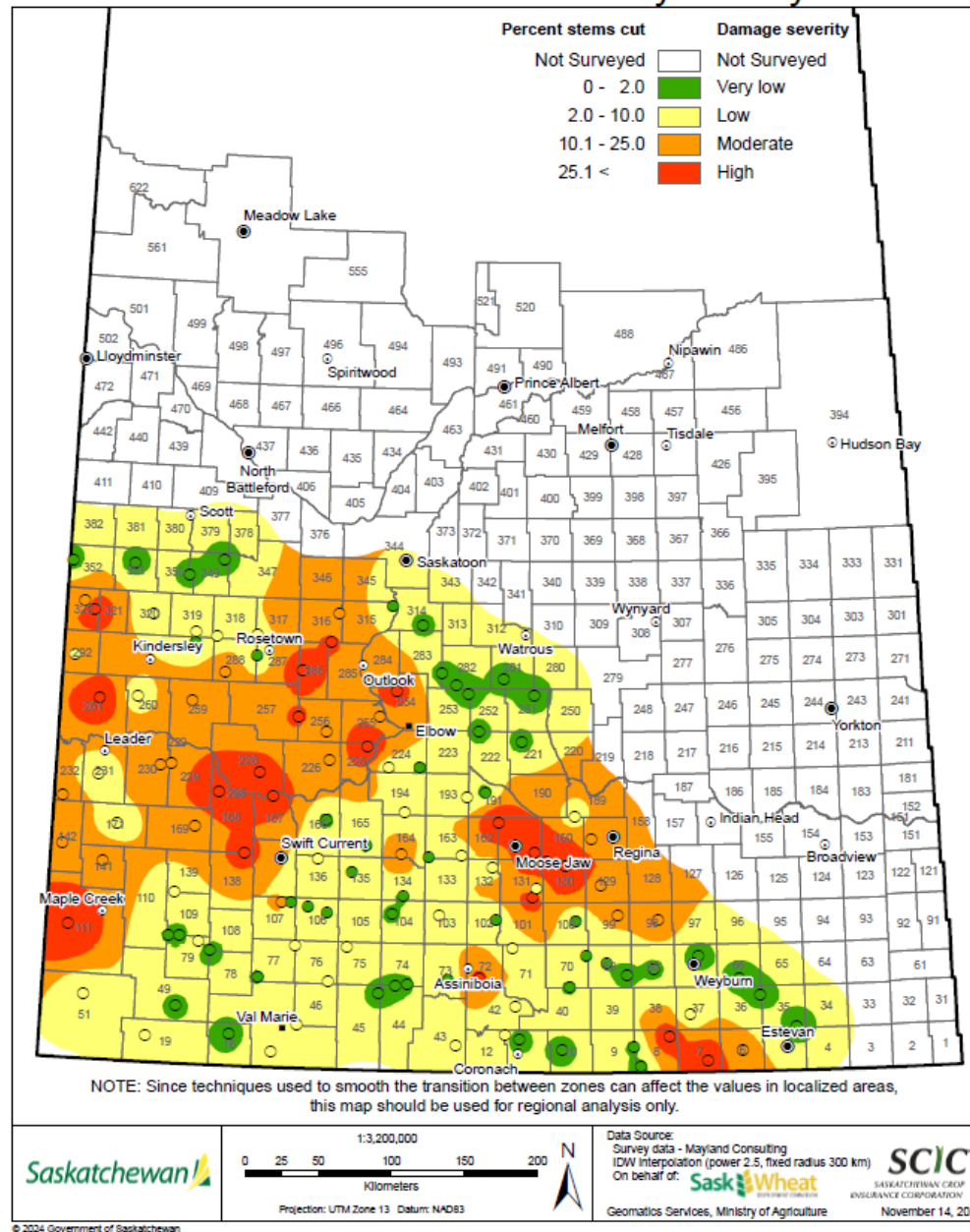


Field margin survey	
Damage severity	Percent stems cut
High	> 25
Moderate	10 - 25
Low	2 - 10
Very low	0 - 2

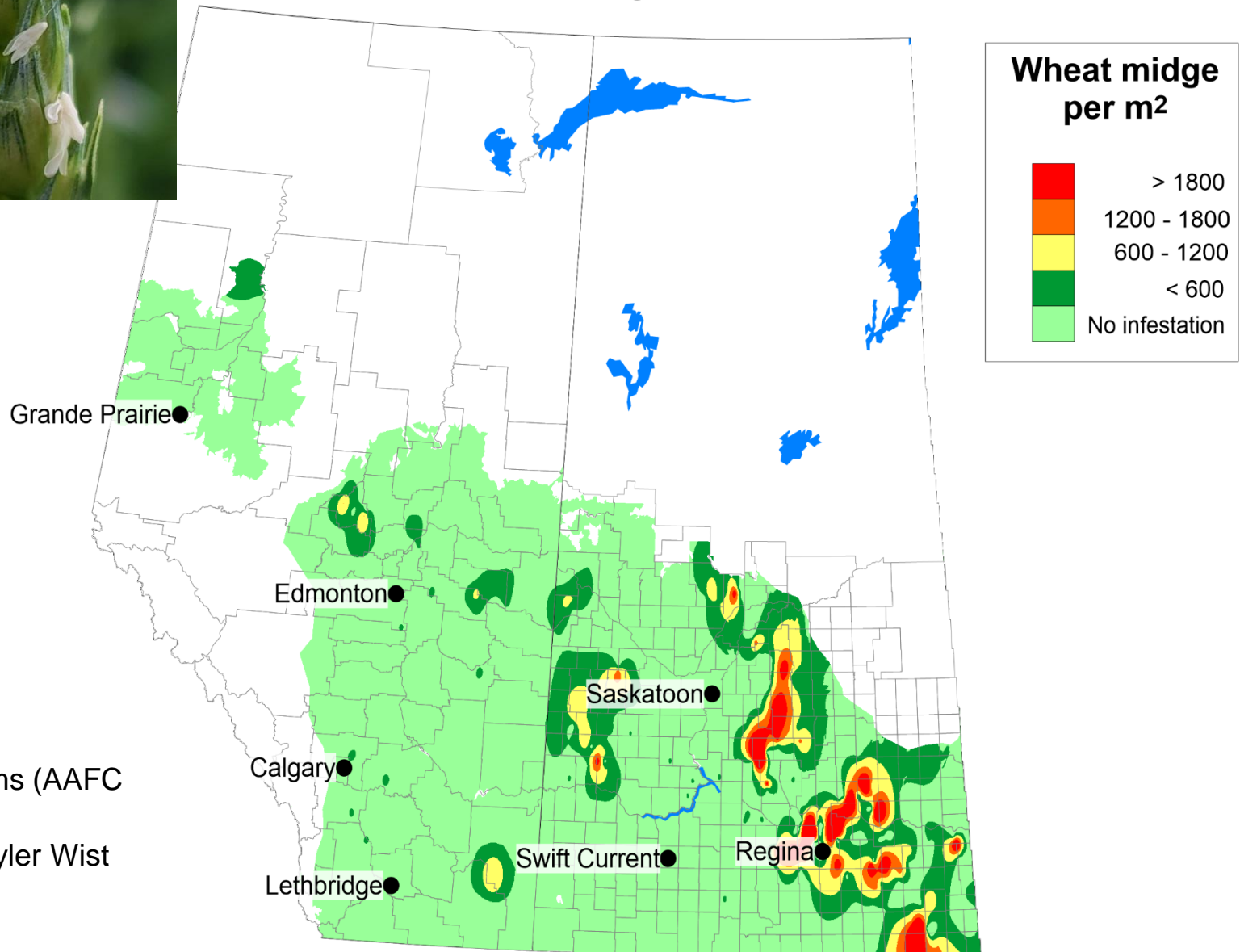
Alberta

Williams and Vankosky (AAFC) 2023

Saskatchewan Wheat Stem Sawfly Survey - 2024



Wheat Midge 2024 Survey



Map by Jon Williams (AAFC
Saskatoon)

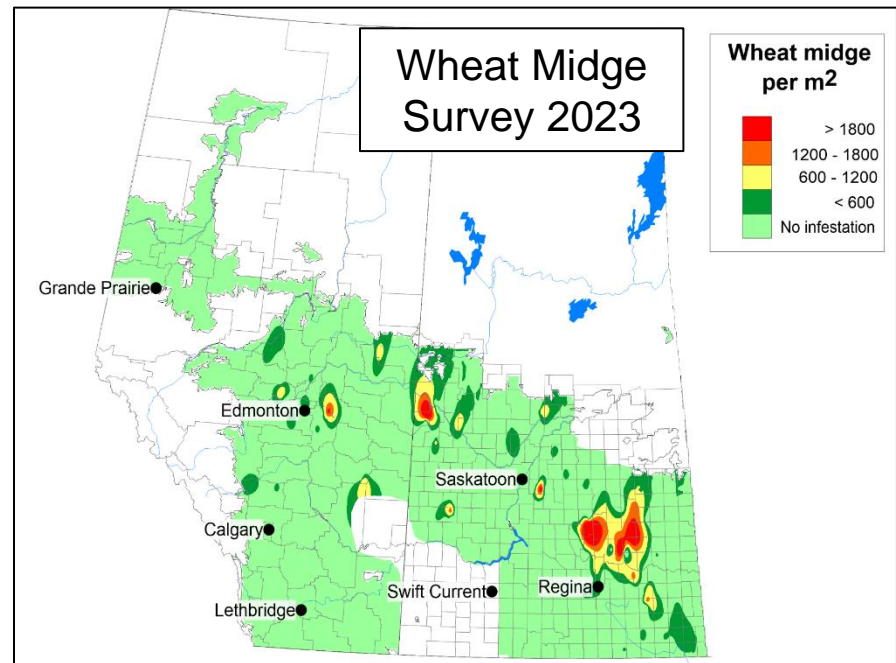
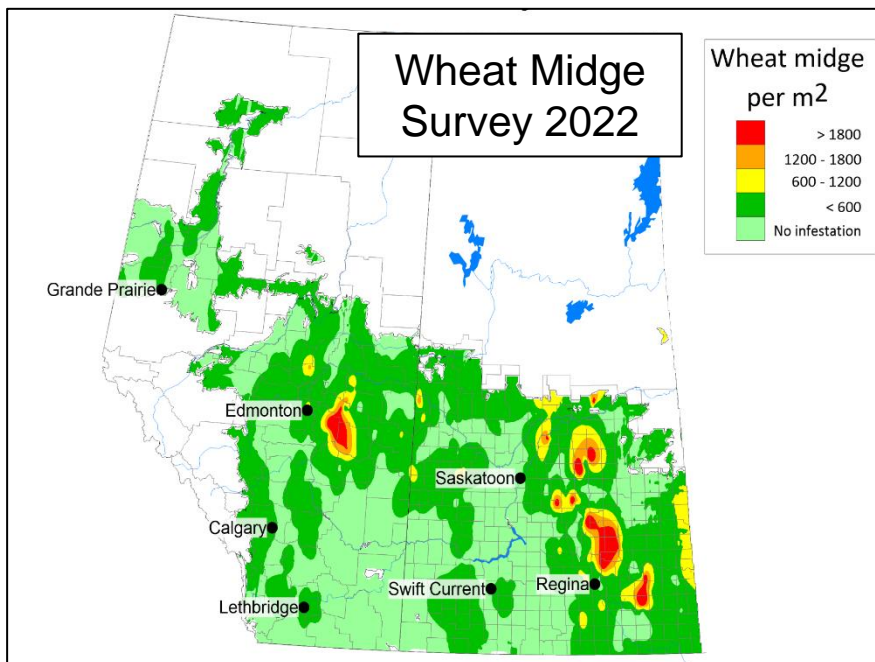
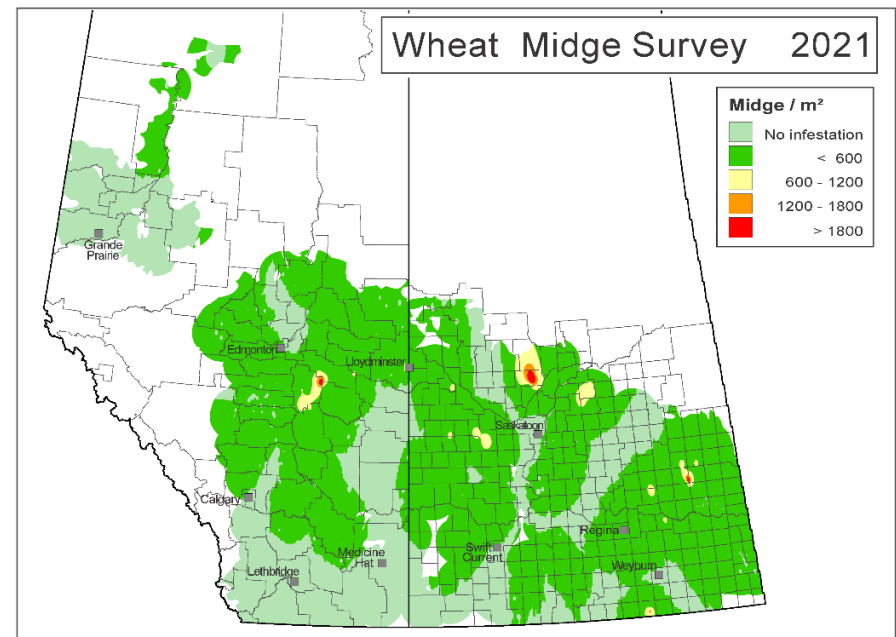
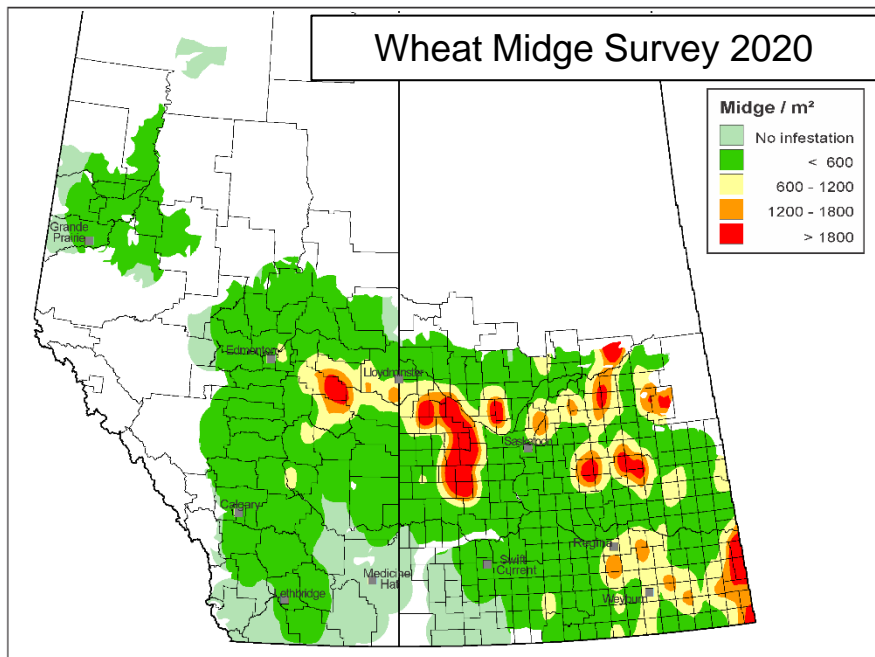
Midge picture by Tyler Wist



Agriculture and
Agri-Food Canada

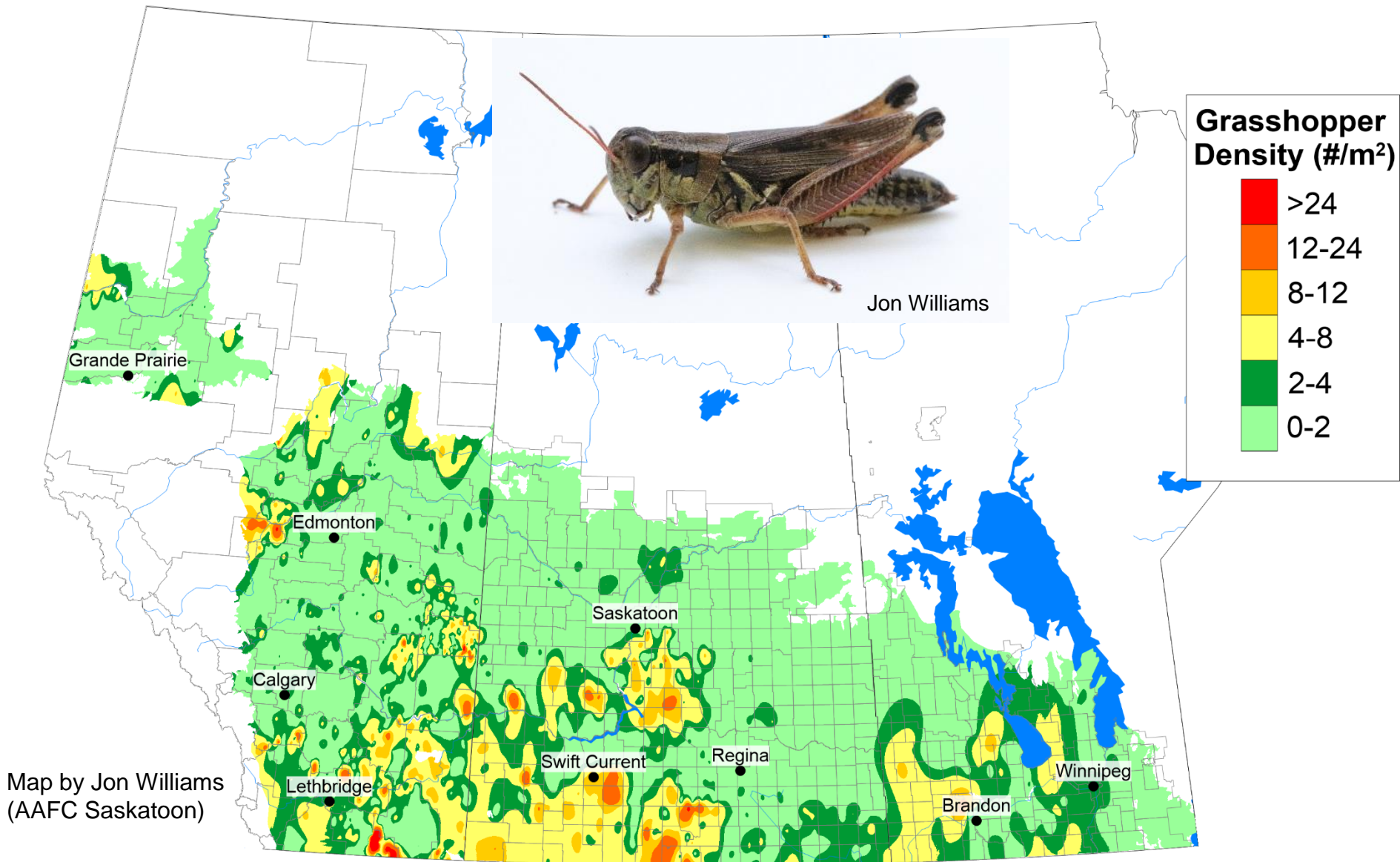
Agriculture et
Agroalimentaire Canada





Maps by David Giffen, Ross Weiss and Jon Williams (AAFC-Saskatoon); **Data from BC Peace not shown**

Grasshopper 2024 Survey



Agriculture and
Agri-Food Canada

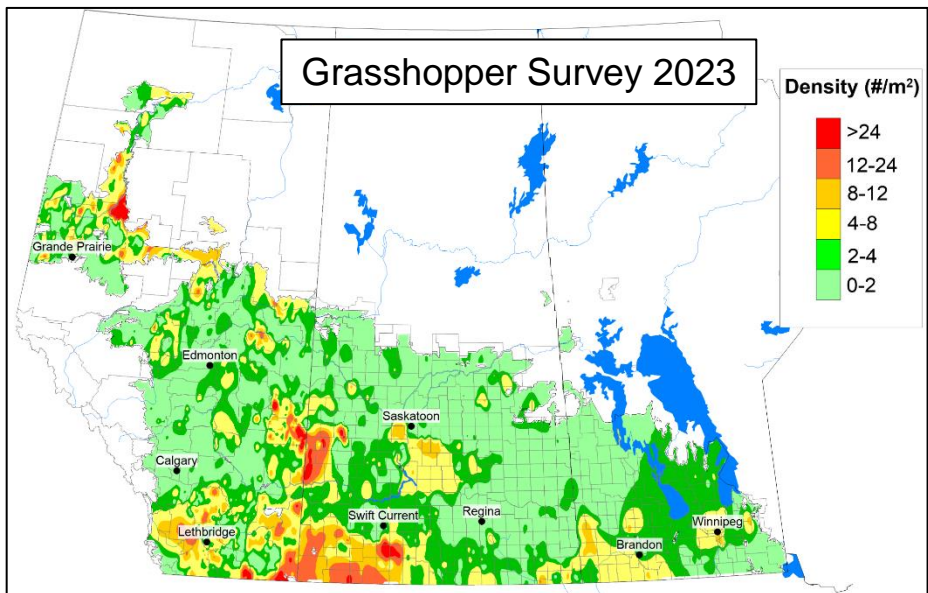
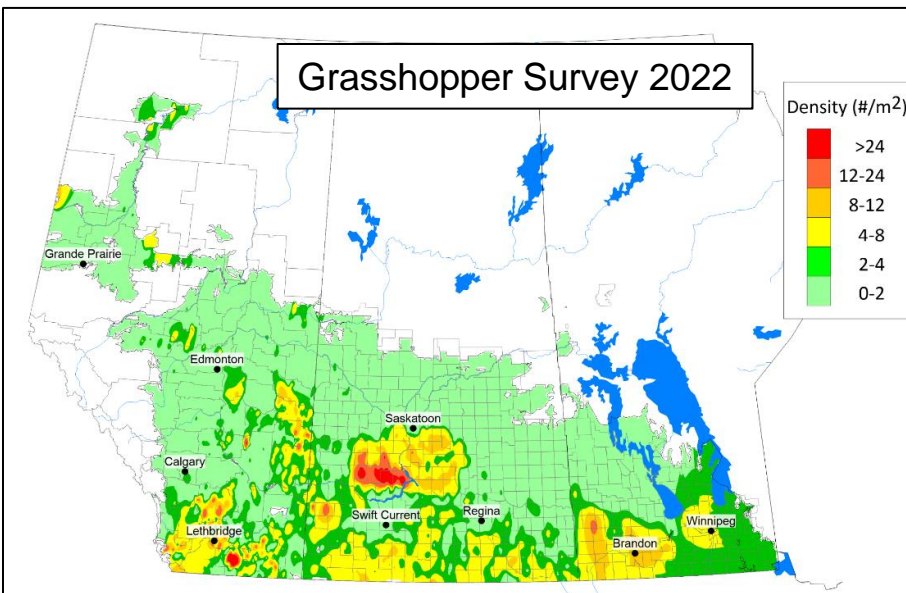
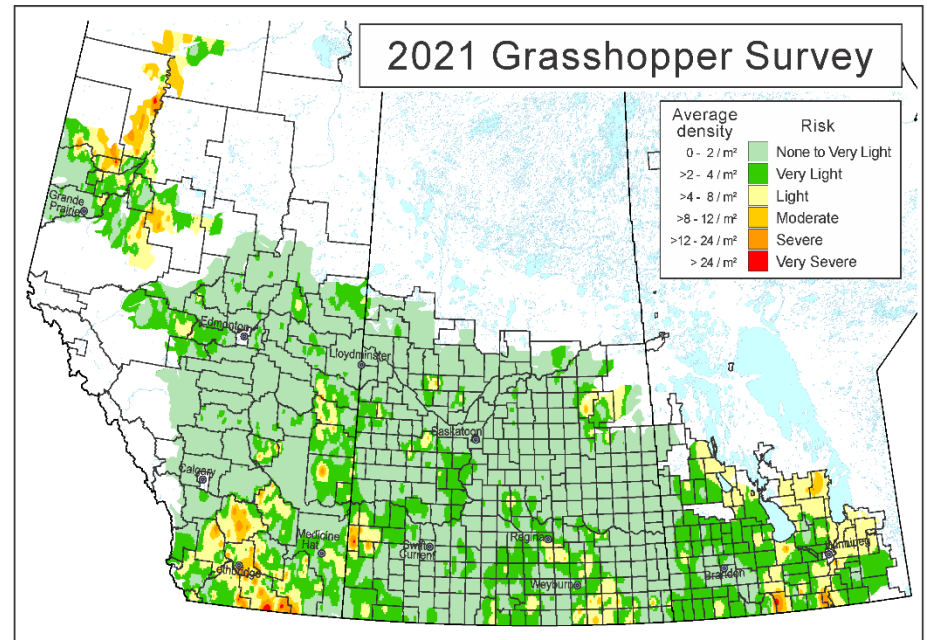
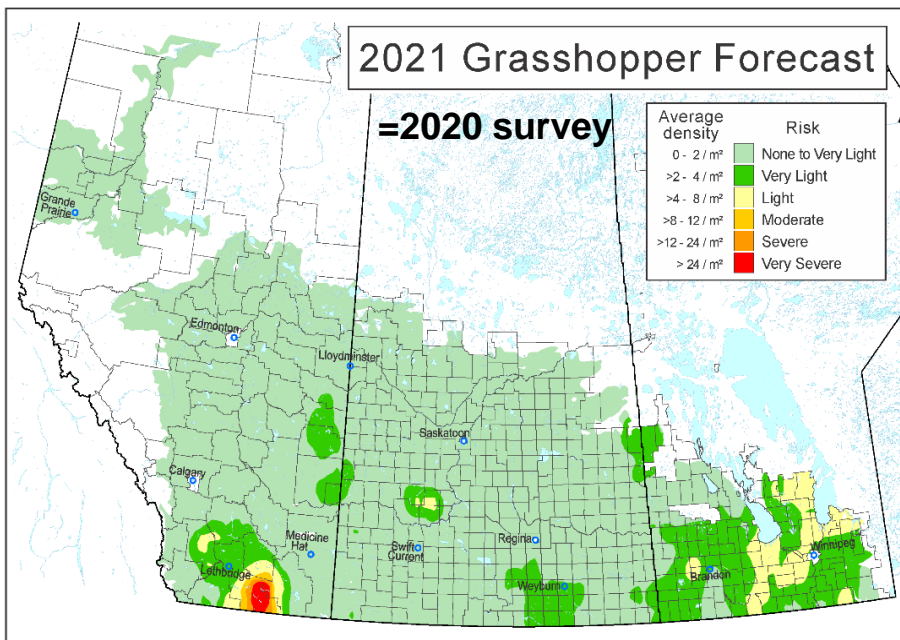
Agriculture et
Agroalimentaire Canada

Alberta

Saskatchewan

Manitoba



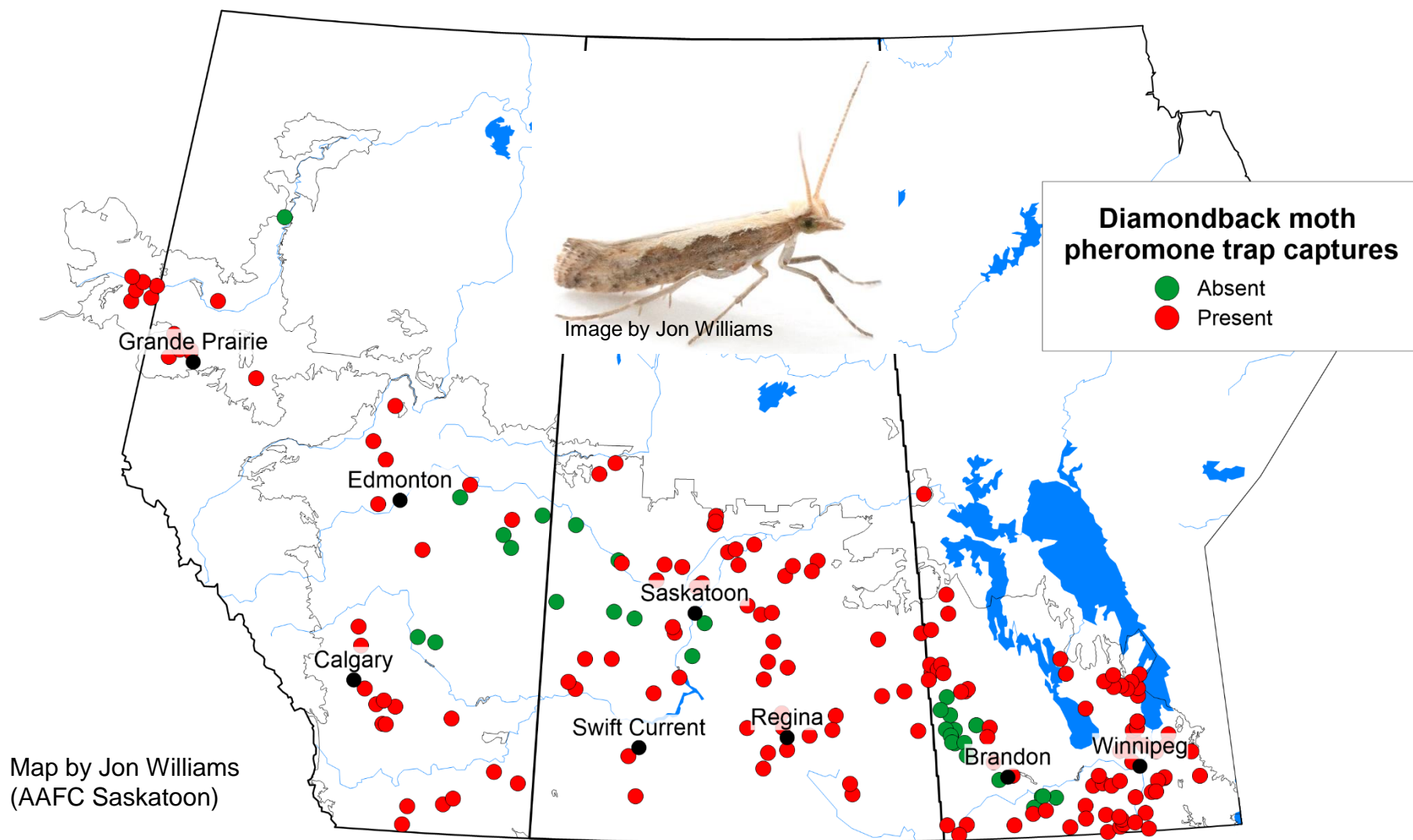


Maps by David Giffen (2020-21), Ross Weiss (2022) and Jon Williams (2023); AAFC-Saskatoon

Diamondback Moth

2024 Survey

Presence (red - 83.9%)/Absence (green - 16.1%)



Agriculture and
Agri-Food Canada

Agriculture et
Agroalimentaire Canada

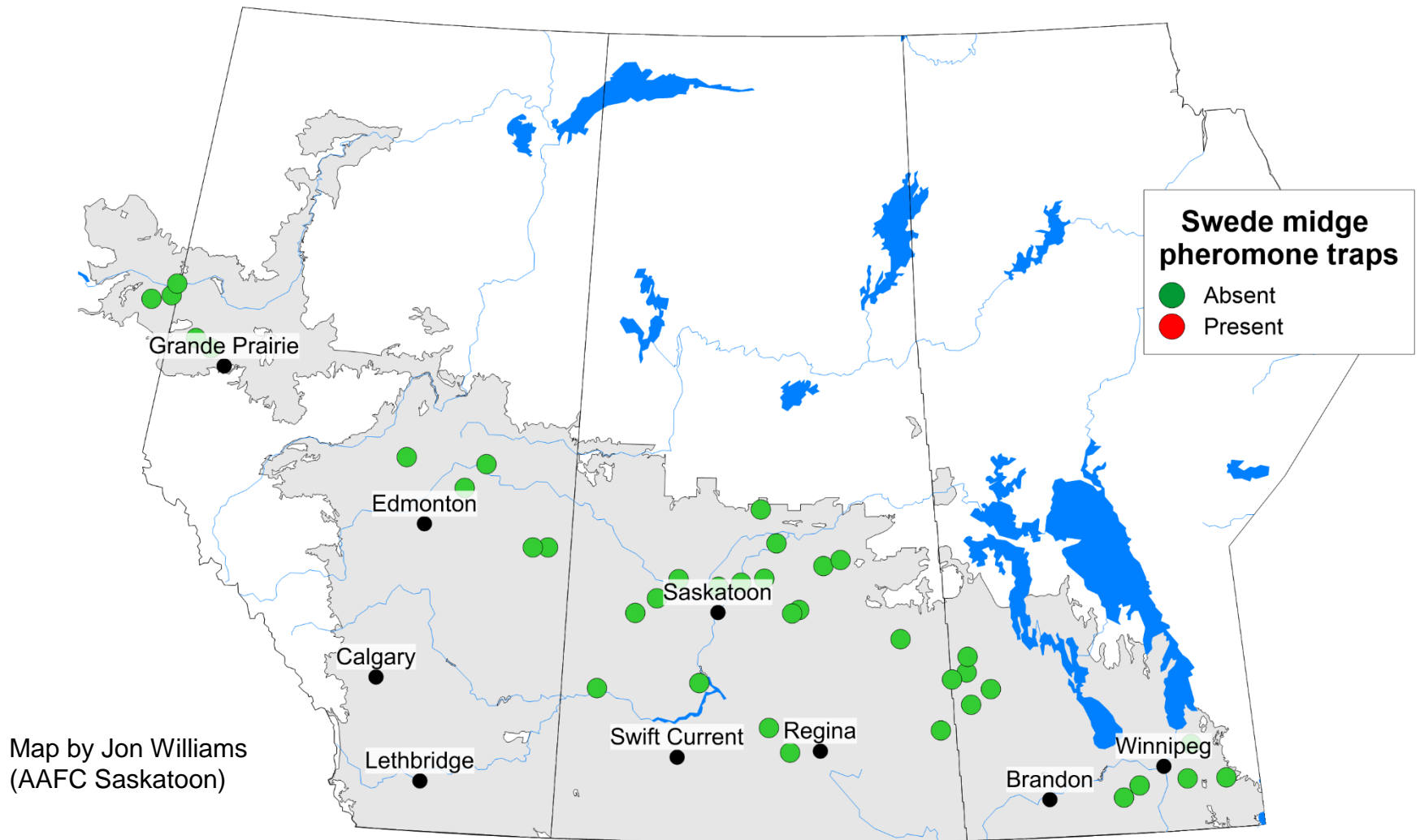
Alberta

Saskatchewan

Manitoba



No swede midge were caught in pheromone traps in 2024!



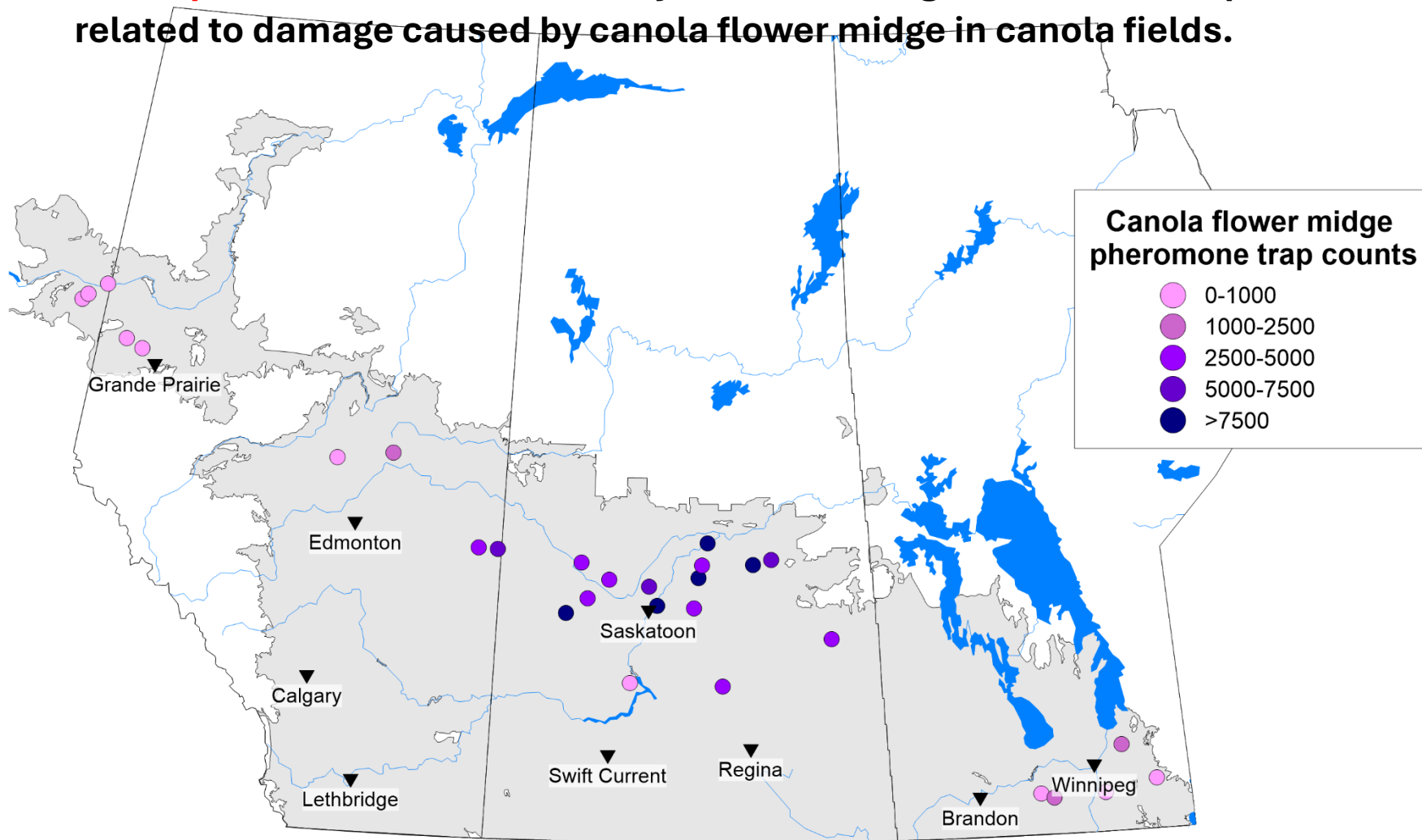
Agriculture and
Agri-Food Canada

Agriculture et
Agroalimentaire Canada



Canola Flower Midge 2024

This map provides an estimate of the distribution of canola flower midge, not its potential impact on canola. We do not yet know if midge numbers in traps are related to damage caused by canola flower midge in canola fields.



Agriculture and
Agri-Food Canada

Agriculture et
Agroalimentaire Canada

