



Priority Invasive and Migratory Insects to Report PRAIRIE REGION



Insects to watch for and report by anyone interacting with insects. Use the QR CODE to report all observations, including species **regulated by the Canadian Food Inspection Agency (CFIA)**.



Lawrence Barringer, Pennsylvania Dept. of Agriculture, bugwood.org

Bryan Brunet, AAFC

Spotted lanternfly, *Lycorma delicatula*
Hosts: Tree of heaven, grapevine, various (fruit) trees and shrubs
Not present in Canada
CFIA REGULATED



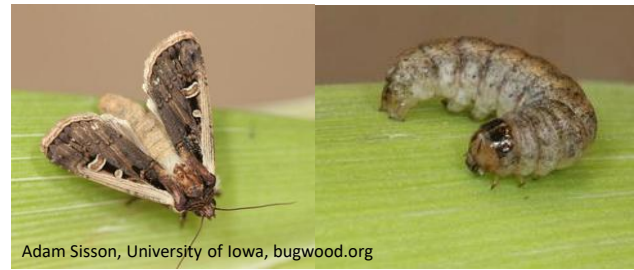
©MWLR, CC BY-NC 4.0

Yellow-spotted stink bug, *Erthesina fullo*
Hosts: Fruits, vegetables, and ornamental plants
Not present in Canada



Susan Ellis, bugwood.org

Brown marmorated stink bug, *Halyomorpha halys*
Hosts: Fruits, vegetables, ornamental plants
Not present in AB, SK, MB



Adam Sisson, University of Iowa, bugwood.org

Western bean cutworm, *Striacosta albicosta*
Hosts: Dry beans, corn, soybean (less preferred)
Not present/established in AB, SK, MB



Karla Salp, Washington State Department of Agriculture, bugwood.org

Spongy moth, *Lymantria dispar*
Hosts: Oak, maple, beech, willow, apple, plum
Not present/established in AB, SK, MB
CFIA REGULATED



Russ Ottens, bugwood.org

Fall armyworm, *Spodoptera frugiperda*
Hosts: Corn, cereals, forages
Migrant into western Canada



Mark Dreiling, bugwood.org



Priority Invasive and Migratory Insects to Report

PRAIRIE REGION



Insects to watch for and report by anyone interacting with insects. Use the QR CODE to report all observations, including species **regulated by the Canadian Food Inspection Agency (CFIA)**.



Klaus Bolte

Asian long-horned beetle, *Anoplophora glabripennis*

Hosts: deciduous trees

Not present in Canada / **CFIA REGULATED**



William Fountain, University of Kentucky, bugwood.org

USDA ARS photo unit, bugwood.org

Japanese beetle, *Popillia japonica*

Hosts: Turf, fruits, vegetables, ornamentals

Not present in AB, SK, MB

CFIA REGULATED



@Natural Resources Canada

Emerald ash borer, *Agrilus planipennis*

Hosts: Ash species

Not present in AB, SK, detected in MB

CFIA REGULATED



Olivia Dorn, AAFC-Charlottetown

Laboratoire d'expertise et de diagnostic en phytoprotection - MAPAQ

Pollen beetle, *Brassicogethes viridescens*

Hosts: canola and related plants

Not present in AB, SK, MB



Karla Salp, WSDA, bugwood.org

5599782

Northern giant hornet, *Vespa mandarinia*

Threat to native bees and honeybee hives

Aggressive with painful sting

Not present in Canada



Allison Morris, bugwood.org

European cherry fruit fly, *Rhagoletis cerasi*

Hosts: Cherry varieties and wild honeysuckle

Not present in AB, SK, MB / **CFIA REGULATED**