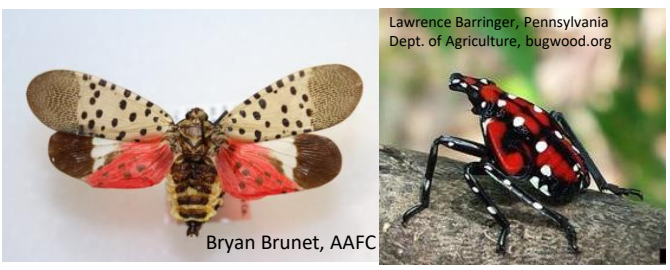




# Priority Invasive and Migratory Insects to Report BRITISH COLUMBIA



Insects to watch for and report by anyone interacting with insects. Use the QR CODE to report all observations, including species **regulated by the Canadian Food Inspection Agency (CFIA)**.



Lawrence Barringer, Pennsylvania Dept. of Agriculture, bugwood.org

Bryan Brunet, AAFC

## Spotted lanternfly, *Lycorma delicatula*

Hosts: Tree of heaven, grapevine, various (fruit) trees and shrubs

**Not present in Canada / CFIA REGULATED**



Klaus Bolte

## Asian longhorned beetle, *Anoplophora glabripennis*

Hosts: Deciduous trees

**Not present in Canada / CFIA REGULATED**



Karla Salp, WSDA, bugwood.org

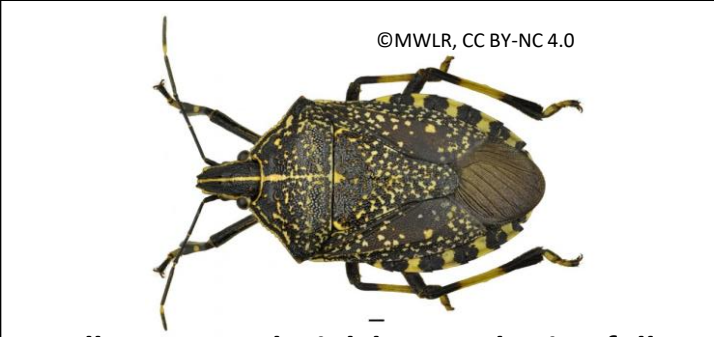
5599782

## Northern giant hornet, *Vespa mandarinia*

Threat to native bees and honeybee hives

Aggressive with painful sting

**Not present in Canada**



©MWLR, CC BY-NC 4.0

## Yellow-spotted stink bug, *Erthesina fullo*

Hosts: Fruits, vegetables, and ornamental plants

**Not present in Canada**



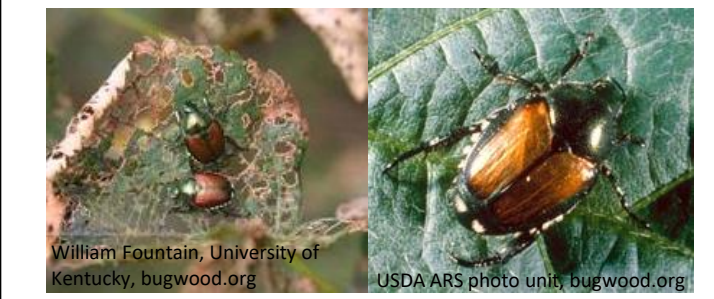
Karla Salp, Washington State Department of Agriculture, bugwood.org

## Spongy moth, *Lymantria dispar*

Hosts: Oak, maple, beech, willow, apple, plum

**Not established in BC**

**CFIA REGULATED**



William Fountain, University of Kentucky, bugwood.org

USDA ARS photo unit, bugwood.org

## Japanese beetle, *Popillia japonica*

Hosts: Turf, fruits, vegetables, ornamentals

**Limited distribution in B.C.: Lower Mainland only**

**CFIA REGULATED**





# Priority Invasive and Migratory Insects to Report

## BRITISH COLUMBIA



Insects to watch for and report by anyone interacting with insects. Use the QR CODE to report all observations, including species **regulated by the Canadian Food Inspection Agency (CFIA)**.

Szabolcs Sáfián, University of West Hungary, Bugwood.org



### Box tree moth, *Cydalima perspectalis*

Hosts: Boxwood shrubs (*Buxus* spp.)

Not present in BC / **CFIA REGULATED**

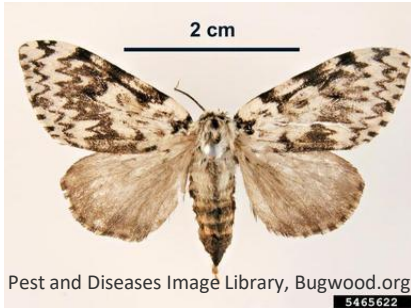


### Emerald ash borer, *Agrilus planipennis*

Hosts: Ash species

Limited distribution, detected in City of Vancouver

**CFIA REGULATED**



### Nun moth, *Lymantria monacha*

Hosts: Mainly coniferous trees

Not present in Canada / **CFIA REGULATED**



### Tomato leafminer, *Tuta (Phthorimaea) absoluta*

Hosts: Tomato, other Solanaceae

Not present in Canada / **CFIA REGULATED**



### Rosy tussock moth, *Lymantria mathura*

Hosts: Oak, beech, fruit trees

Not present in Canada

**CFIA REGULATED**



### European cherry fruit fly, *Rhagoletis cerasi*

Hosts: Cherry varieties and wild honeysuckle

Not present in BC

**CFIA REGULATED**