

Alberta Crop Report



Crop Conditions as of May 24, 2022 (Abbreviated Report)

Precipitation over the past week was highly variable, and as such did not provide as much moisture as needed for many dry areas across the province. Most areas in the southern half of the province received less than 10 mm of moisture, with some (mainly in the South and North East Regions) receiving less than 5 mm. In the Peace Region, most areas stayed dry allowing seeding to progress, following an exceptionally wet start to spring.

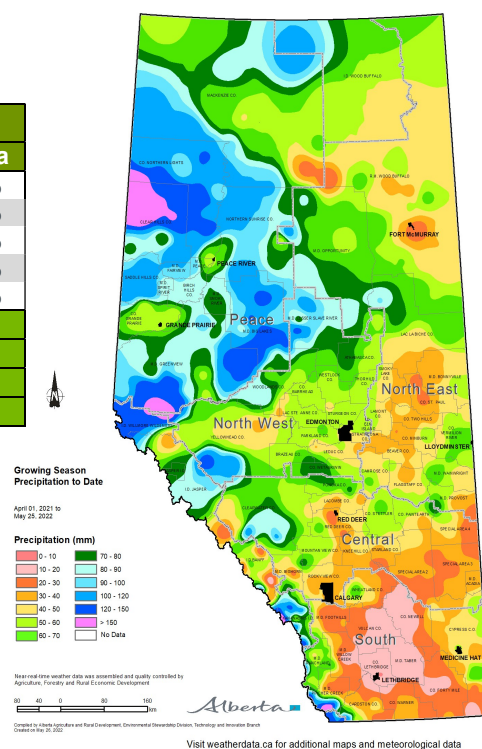
Growing season precipitation to date was less than 40 mm in most parts of the South, Central and North East Regions of the province (light orange in the map). The need for moisture remains acute in most parts of the South Region (dark orange and pink), which have received less than 30 mm. More rain and warmer temperatures are needed for these areas, which hopefully will occur in June, which is on average the wettest month of the year.

Seeding progress for major crops in the province is now 73 per cent complete, up 28 per cent from a week ago, but slightly behind the 5-year and 10-year averages of 77 and 82 per cent, respectively. Regionally, producers in the North East Region made the most seeding progress at 37 per cent, followed by the Peace and North West Regions with 34 and 29 per cent, respectively. Seeding advanced 27 per cent in the Central Region and 14 per cent in the South. Compared to the 5-year averages, seeding is most behind in the Peace Region, due to the cold and wet weather experienced at the beginning of the season.

Table 1: Alberta Seeding Progress as of May 24, 2022

	% Seeded					
	South	Central	N East	N West	Peace	Alberta
Spring Wheat	92.5%	91.2%	88.7%	73.2%	39.6%	82.9%
Barley	89.8%	83.0%	62.0%	46.6%	32.2%	72.7%
Oats	84.4%	73.7%	48.8%	35.3%	30.8%	46.9%
Canola	79.2%	79.5%	72.0%	42.3%	34.5%	64.0%
Dry Peas	95.9%	98.3%	99.9%	75.6%	44.7%	85.2%
Major Crops, May 24	88.4%	85.6%	78.1%	54.4%	36.6%	73.4%
Major Crops, May 17	74.4%	59.0%	41.5%	25.4%	2.5%	45.8%
5-year (2017-2021) Avg	89.6%	81.0%	75.1%	67.4%	63.1%	77.3%
10-year (2012-2021) Avg	91.5%	84.2%	78.7%	77.4%	75.2%	82.4%

Source: AFRED/AFSC Crop Reporting Survey



Last week's precipitation improved soil moisture reserves for the South, Central and North East, was unchanged in the North West Region and declined in the Peace. Despite the improvement in most areas, soil moisture reserves remain below average for most parts of the province, with the exception of the Peace Region. Overall, provincial surface soil moisture is rated (sub-surface soil moisture ratings shown in brackets) at 17 (31) per cent poor, 35 (29) per cent fair, 42 (34) per cent good, 6 (6) per cent excellent, with no excessive moisture (see Table 2).

Table 2: Alberta Surface Soil Moisture Ratings as of May 24, 2022

	Poor	Fair	Good	Excellent	Excessive
South	32.1%	48.1%	19.8%	0.0%	0.0%
Central	16.6%	30.6%	46.6%	6.3%	0.0%
North East	7.2%	33.6%	53.8%	5.4%	0.0%
North West	3.4%	37.4%	58.1%	1.1%	0.0%
Peace	0.0%	11.7%	59.7%	28.6%	0.0%
Province	16.6%	35.4%	42.1%	5.9%	0.0%
5-year (2017-2021) Avg	5.5%	16.8%	48.0%	25.4%	4.2%
10-year (2012-2021) Avg	6.2%	19.3%	46.6%	24.9%	2.9%

Source: AFRED/AFSC Crop Reporting Survey

Precipitation and warmer temperatures over the past week improved pasture growing conditions in all regions excepting the Peace Region, where rain was limited, causing pasture conditions to deteriorate slightly by one per cent. Even so, many pastures and hay lands are in need of moisture across Alberta. Provincially, pasture conditions (tame hay shown in brackets) are now estimated at 21 (15) per cent poor, 47 (43) per cent fair, 29 (38) per cent good and 3 (4) per cent excellent, with similar ratings reported for tame hay (see Table 3).

Table 3: Alberta Pasture Growing Conditions as of May 24, 2022

	Poor	Fair	Good	Excellent
South	35.8%	55.8%	8.1%	0.2%
Central	15.4%	34.3%	43.2%	7.2%
North East	9.9%	49.9%	38.0%	2.2%
North West	7.8%	56.9%	35.3%	0.0%
Peace	16.1%	40.4%	43.5%	0.0%
Province	21.1%	46.7%	29.4%	2.8%
5-year (2017-2021) Avg	10.1%	23.3%	57.0%	9.6%
10-year (2012-2021) Avg	10.2%	23.3%	55.6%	10.8%

Source: AFRED/AFSC Crop Reporting Survey

Regional Assessments:

Region One: South (Strathmore, Lethbridge, Medicine Hat, Foremost)

- Most counties in the region received at least 5 mm of rain over the past week, with some (in the southern parts) receiving as much as 20 mm. For some central areas precipitation was less than 5 mm. Although rain was most welcome, more is still needed, as soil moisture levels are still low.
- Seeding is estimated at 88 per cent complete, up 14 per cent from a week ago and slightly behind the 5-year average of 90 per cent. Nearly 47 per cent of crops have now emerged.
- Hay and pasture growing conditions remained unchanged from a week ago, as the rain maintained existing conditions rather than advancing growth. Pasture conditions (tame hay shown in brackets) are rated as 36 (34) per cent poor, 56 (52) per cent fair and 8 (14) per cent good.
- Fall seeded crops are rated as 6 per cent poor, 41 per cent fair, 33 per cent good and 20 per cent excellent.

Region Two: Central (Rimbey, Airdrie, Coronation, Oyen)

- Moisture received over the past week was helpful in maintaining soil moisture and germinating seeds. Most areas had at least 10 mm of rain, with some receiving 15-20 mm. The foothills had 20-30 mm of precipitation.
- Crop seeding progress advanced 27 per cent this week to 86 per cent complete, ahead of the 5-year average of 81 per cent. About 37 per cent of seeded crops have now emerged.
- Pasture and tame hay fields are now showing growth due to warmer temperatures. Compared to last week, pasture growing conditions rating improved by 14 per cent. Pasture conditions (tame hay shown in brackets) are rated as 16 (8) per cent poor, 34 (25) per cent fair, 43 (54) per cent good and 7 (13) per cent excellent.
- For fall seeded crops, conditions are reported as 5 per cent poor, 22 per cent fair, 65 per cent good and 8 per cent excellent.

Region Three: North East (Smoky Lake, Vermilion, Camrose, Provost)

- Over the past week, most areas had at least 5 mm of rain, while northeastern areas received only 1-5 mm. Although rain halted seeding operations for a day, it was most welcome and helpful to improve soil moisture and pasture growing conditions.
- Seeding is now 78 per cent complete, up 37 per cent from a week ago, with about 28 per cent of crops emerged. Compared to the 5-year average, seeding is ahead while germination is slightly behind.
- Pasture conditions (tame hay shown in brackets) are rated as 10 (12) per cent poor, 50 (51) per cent fair, 38 (35) per cent good and 2 (2) per cent excellent.
- Fall seeded crops are rated as 3 per cent poor, 29 per cent fair, 66 per cent good and 2 per cent excellent.

Region Four: North West (Barrhead, Edmonton, Leduc, Drayton Valley, Athabasca)

- The western half of the region received at least 15 mm of rain, while the eastern half received 5-10 mm. Despite the precipitation, moisture conditions are similar to a week ago, as wind and high temperatures impacting soil moisture.
- Cooler overnight temperatures and some rain have caused producers to postpone seeding oilseeds and instead, seed cereals. Seeding is now 54 per cent complete, up 29 per cent from a week ago, but still behind the 5-year average of 67 per cent. About six per cent of seeded crops have now emerged.
- The moisture received this week, coupled with above 20 degree temperatures have benefited pasture and hay lands, improving growth conditions by four and seven per cent, respectively. Pasture conditions (tame hay shown in brackets) are rated as 8 (4) per cent poor, 57 (54) per cent fair and 35 (42) per cent good.
- For fall seeded crops, conditions are reported as 5 per cent fair and 95 per cent good.

Region Five: Peace (Fairview, Falher, Grande Prairie, Peace River, Valleyview)

- Rain over the past week mostly confined to the southern parts of the region, although other areas received minimal precipitation, providing ideal seeding conditions.
- Seeding is now estimated at 37 per cent complete, up 34 per cent from a week ago. Nearly two per cent of crops have now emerged.
- Pasture conditions (tame hay shown in brackets) are rated as 16 (19) per cent poor, 40 (42) per cent fair and 44 (39) per cent good.

Contact

Alberta Agriculture, Forestry and Rural Economic Development
Intergovernmental and Trade Relations Branch
Statistics and Data Development Section
May 27, 2022

Ashan Shooshtarian
Crop Statistician
Phone: 780-422-2887
Email: ashan.shooshtarian@gov.ab.ca

Note to Users: The contents of this document may not be used or reproduced without properly accrediting AFSC and Alberta Agriculture, Forestry and Rural Economic Development, Intergovernmental and Trade Relations Branch, Statistics and Data Development Section