

Alberta Crop Report

NOTE – Crop Reports will be released bi-weekly in July and August



Crop Conditions as of June 27, 2022

Two highlight stories for this week's crop report are increasingly aggressive crop development after early June rains and also the significant year-over-year improvement in soil moisture levels across the province. This week, 75 per cent of all crops in the province are rated in good or excellent condition, only marginally behind both the five-year and 10-year averages (74 and 73 per cent respectively). Mustard, durum wheat, and potatoes are the lowest rated crops qualitatively, whereas chickpeas, spring wheat, oats and flax are rated in the best condition. Other major crops like barley, canola, and dry peas are relatively in line with long-term provincial averages for this time in the growing season.

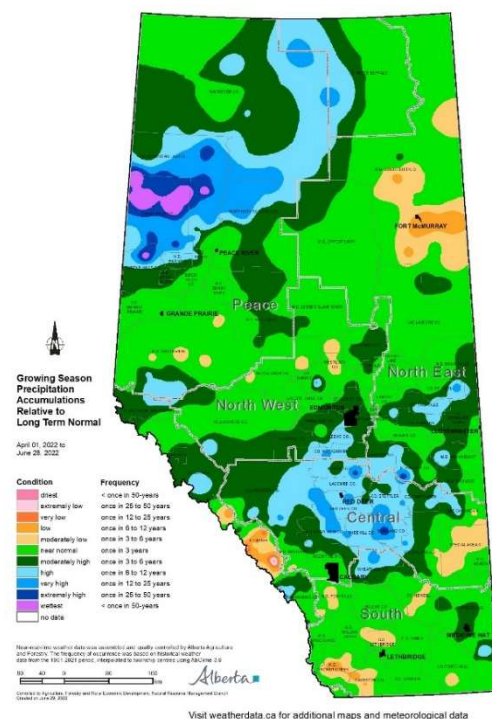
Table 1: Regional Crop Condition Ratings as of June 27, 2022

	Per cent rated in Good to Excellent Condition					
	South	Central	N East	N West	Peace	Alberta
Spring Wheat*	67.7%	82.6%	90.2%	89.6%	82.7%	81.9%
Durum Wheat	66.6%	40.6%	--	--	--	63.0%
Barley*	57.1%	88.1%	86.3%	80.0%	75.3%	75.9%
Oats*	76.6%	77.3%	86.9%	78.3%	75.9%	79.9%
Canola*	54.0%	76.5%	76.2%	63.5%	78.7%	71.0%
Dry Peas*	70.9%	75.1%	85.2%	78.0%	73.5%	75.3%
Mustard	47.9%	25.1%	--	--	--	41.4%
Flax	76.2%	79.5%	93.1%	--	--	78.9%
Potatoes	66.1%	80.0%	100%	80.0%	--	67.5%
Chickpeas	86.9%	20.0%	--	--	--	83.8%
Lentils	79.7%	28.2%	--	--	--	71.8%
All Crops, June 27	64.1%	78.8%	83.4%	76.1%	78.8%	75.2%
Major Crops(+), June 27	61.8%	81.2%	83.4%	76.0%	78.8%	76.2%
All Crops, June 14, 2022	63.0%	79.8%	79.1%	80.8%	78.8%	74.6%
5-year (2017-2021) Avg	67.4%	79.3%	84.3%	69.8%	67.7%	74.5%
10-year (2012-2021) Avg	71.4%	73.6%	79.0%	71.0%	69.7%	73.5%

Source: AFRED/AFSC Crop Reporting Survey

However, growth and development staging is in general still modestly behind long-term averages. Notably though, these delays in growth and development compared to long-term normal are narrowing as the season progresses. During the first two weeks of June, significant areas of the province received from 40-125 mm of rain and crop reporters are now able to start telling the story of the impact of those rain events. Prior to the rains and as at the May 31 crop report, province-wide emergence was at 55 per cent and behind the five-year average of 61 per cent. Now, 57 percent of all crops are in the rosette or 7-12 node stage and closer to the five-year average of 60 per cent. The early June rains seem to have given crops the opportunity to advance and catch up closer to long-term average for development and growth.

Additionally, as at the May 31, 2022 crop report and prior to the rains, surface soil moisture across the province was rated as 57 per cent poor or fair and 43 per cent good or excellent. These qualitative surface moisture conditions have now drastically improved to only 19 per cent poor or fair and 76 per cent good to excellent and five per cent excessive.



It is also worth noting the year-over-year change in soil moisture. At this time last year on the June 28, 2021 crop report, soil moisture was rated as 62 per cent as poor or fair and only 38 per cent as good or excellent. Now, soil moisture is rated as 19 per cent poor or fair, 76 per cent as good or excellent, and five per cent excessive.

Subsoil moisture (below six inches) ratings have also improved. As at May 31, 2022, and prior to the rains, Alberta's sub soil moisture was rated 63 per cent poor or fair and 37 per cent good or excellent. After early June rainfall those numbers for deeper soil moisture have now improved to 33 per cent poor or fair, 61 per cent good or excellent, and three per cent excessive.

Specifically in the south, just three weeks ago sub soil moisture was rated as 91 per cent poor or fair. This week that number has dropped to 67 per cent as more acreage moves in to good qualitative ranking for subsoil moisture. While an improvement and major relief, timely precipitation throughout the growing season will still be needed in the south.

On the pest reports, flea beetle is the most significant pest showing up at beyond threshold levels. Gopher populations are also beyond threshold levels in South, Central and North East regions.

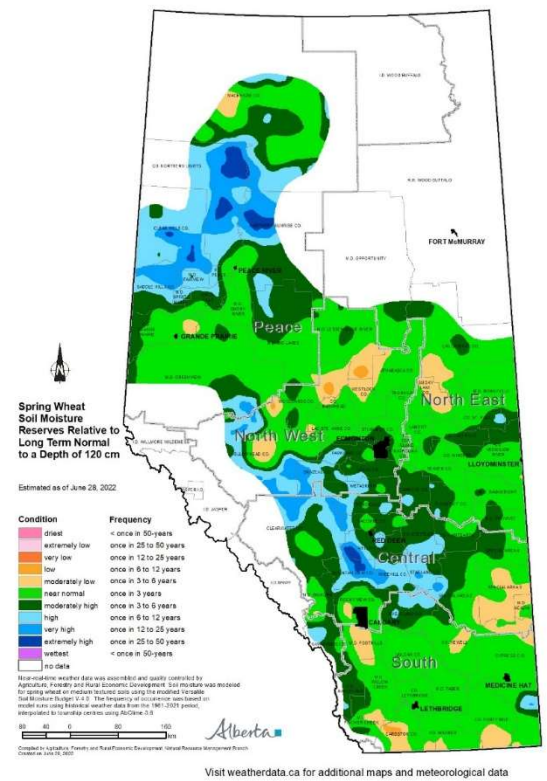


Table 2: Alberta Surface Soil Moisture Ratings as of June 27, 2022

	Poor	Fair	Good	Excellent	Excessive
South	7.2%	31.9%	52.0%	8.0%	1.0%
Central	1.7%	15.9%	40.1%	31.7%	10.6%
North East	0.0%	4.8%	66.9%	26.6%	1.7%
North West	0.0%	3.6%	50.2%	40.8%	5.3%
Peace	0.0%	4.1%	50.2%	43.1%	2.6%
Province	2.8%	16.3%	51.0%	25.4%	4.5%
Last year (June 28, 2021)	23.4%	38.7%	35.6%	2.2%	0.0%
5-year (2017-2021) Avg	8.6%	23.3%	45.4%	18.5%	4.2%
10-year (2012-2021) Avg	10.1%	19.0%	42.7%	24.4%	3.8%

Source: AFRED/AFSC Crop Reporting Survey

While regional forage challenges are still significant, the provincial feed supply qualitative rankings for both pasture and tame hay are improved from this time last year. While still rated lower than long-term averages, 62 per cent of tame hay is now good to

excellent, compared to only 44 per cent this time last year. Pastures are reporting similar year-over-year improvements but with significant increases in weed pressure, especially in the South, North West, and Peace.

Regional Assessments:

Region One: South (Strathmore, Lethbridge, Medicine Hat, Foremost)

- Barley and canola rank the lowest for condition of the major crops with oats, pulses, and flax relatively highest.
- Flea beetles and gophers are both ranked as 13 per cent over threshold – the highest of anywhere in the province.
- Early reports of hay yields of 2.3 tons/acre for first-cut on irrigated land. No dry land yield is yet reported, but indications from crop reporters are for very low expectations. Crop reporters indicate perennial crops are not rebounding after June rains in the same manner that annual crops are. Pasture weed growth is reported at 42 per cent moderate or heavy.
- Surface soil moisture conditions (sub-surface shown in brackets) are rated as seven (14) per cent poor, 32 (53) per cent fair, 52 (32) per cent good, and eight (one) per cent excellent.

Region Two: Central (Rimbey, Airdrie, Coronation, Oyen)

- Crop quality is reported mostly as good to excellent on all major crops. Lentils, chickpeas, and mustard are significantly lower in quality compared to all other crops in the region.
- Gophers are the main pest reported at eight per cent over threshold with some marginal flea beetle reports. Pasture weed growth is reported at eight per cent moderate to heavy.
- Surface soil moisture conditions (sub-surface shown in brackets) are rated as two (three) per cent poor, 16 (19) per cent fair, 40 (35) per cent good, 32 (31) per cent excellent, and 11 (11) excessive.

Region Three: North East (Smoky Lake, Vermilion, Camrose, Provost)

- Crop conditions are rated largely as good to excellent. Canola is ranked notably below other major crops for quality.
- Gophers are rated as two per cent over threshold. Flea beetles are largely minimal in this region. Pasture weed growth is five per cent moderate to heavy.
- Surface soil moisture conditions (sub-surface shown in brackets) are rated as 0 (18) per cent poor, five (14) per cent fair, 67 (53) per cent good, 26 (14) per cent excellent, with two (two) per cent excessive.

Region Four: North West (Barrhead, Edmonton, Leduc, Drayton Valley, Athabasca)

- Major crops are predominantly ranked in good to excellent condition. Canola is of the lowest quality compared to all other major crops and is being described by crop reporters as highly variable in quality. There are reports of crops being drowned out from excess moisture and potential late reseeding to greenfeed crops.
- There are no pest reports beyond threshold levels.
- Pasture is ranked 81 per cent good to excellent, however also has 35 per cent moderate to heavy weed pressure.
- Surface soil moisture conditions (sub-surface shown in brackets) are rated as four (10) per cent fair, 50 (68) per cent good, 41 (21) per cent excellent, with five (one) per cent excessive.

Region Five: Peace (Fairview, Falher, Grande Prairie, Valleyview)

- Most crops are rated very consistently at roughly 75 per cent good to excellent condition. Notable is canola, which unlike other regions is the second highest rated crop for quality.
- Flea beetles are six per cent above threshold and army cut worms three per cent above threshold levels.
- Early dry land hay yields are reported at 1.3 tons/acre for first cut and rated 95 per cent in good to excellent condition. Pasture conditions are 59 per cent rated good to excellent, but like in the North West and South are facing significant weed pressure at 53 per cent moderate to heavy pasture weed growth.
- Surface soil moisture conditions (sub-surface shown in brackets) are rated as four (nine) per cent fair, 50 (54) per cent good, 43 (36) per cent excellent, with three (one) per cent excessive.

Contacts

Agriculture Financial Services Corporation
Research and Innovation
Lacombe, Alberta

June 27, 2022

Stuart Chutter
Product Coordinator
Email: schutter@afsc.ca

Note to Users: The contents of this document may not be used or reproduced without properly accrediting AFSC and Alberta Agriculture, Forestry and Rural Economic Development, Intergovernmental and Trade Relations Branch, Statistics and Data Development Section.