

# Alberta Crop Report



## Crop Conditions as of June 28, 2021

NOTE – Crop Reports will be released bi-weekly in July and August

The effects of favourable spring seeding conditions are now evident in the current crop staging. Cereal crop development is averaging early flag leaf stage and very much in line with long-term averages for Alberta. Oilseed and pulse crops are ahead of the norm with 66 per cent in rosette, or seven to 12 node stage, compared to the five- and 10-year averages of 57 and 59 per cent respectively. Oilseed and pulse crops now flowering average 22 per cent compared to the five- and 10-year averages of 11 and 12 per cent.

Prolonged periods of heat with little moisture are taking a toll on crop conditions. The provincial crop condition rating declined 13 percentage points from the last full report on June 15 to 68 per cent rated as good to excellent, compared to the five-year average of 76 per cent, and the 10-year average of 74 per cent (Table 1). South and North West have seen more significant changes, at over 20-point declines, while Central, North East and Peace regions fell to a lesser degree compared to two weeks ago. This week's provincewide heat wave is expected to impact these ratings further.

**Table 1: Regional Crop Condition Ratings as of June 28, 2021**

	% Rated in Good to Excellent Condition					
	South	Central	N East	N West	Peace	Alberta
Spring Wheat*	47.2%	74.7%	88.1%	71.4%	69.4%	70.8%
Durum Wheat	46.7%	58.0%	---	---	---	48.2%
Barley*	50.1%	82.5%	85.0%	70.0%	58.7%	69.5%
Oats*	50.2%	66.5%	83.5%	69.7%	61.5%	70.2%
Winter Wheat	53.6%	58.3%	90.0%	93.0%	---	54.6%
Mixed Grain	20.0%	79.3%	100%	63.2%	---	77.1%
Canola*	51.0%	79.3%	80.2%	71.1%	66.2%	71.1%
Dry Peas*	49.4%	77.3%	89.3%	82.9%	62.4%	67.1%
Lentils	35.5%	70.0%	---	---	---	40.1%
Chickpeas	23.3%	80.0%	---	---	---	25.9%
Mustard	54.7%	70.0%	---	---	---	59.3%
Flax	45.4%	56.4%	96.7%	---	---	53.8%
Potatoes	80.0%	91.5%	100%	100%	---	81.9%
<b>All Crops</b>	<b>48.9%</b>	<b>77.2%</b>	<b>84.3%</b>	<b>71.7%</b>	<b>65.8%</b>	<b>68.3%</b>
<b>Major Crops (*)</b>	<b>49.2%</b>	<b>78.1%</b>	<b>84.3%</b>	<b>71.7%</b>	<b>65.8%</b>	<b>70.3%</b>
<b>June 15, 2021</b>	<b>69.6%</b>	<b>88.4%</b>	<b>88.7%</b>	<b>95.3%</b>	<b>73.1%</b>	<b>81.7%</b>
<b>Last Year</b>	<b>81.7%</b>	<b>95.1%</b>	<b>83.8%</b>	<b>46.9%</b>	<b>68.0%</b>	<b>79.7%</b>
<b>5-year (2016-2020) Avg.</b>	<b>71.8%</b>	<b>78.3%</b>	<b>84.9%</b>	<b>71.5%</b>	<b>70.4%</b>	<b>76.2%</b>
<b>10-year (2011-2020) Avg.</b>	<b>74.6%</b>	<b>75.5%</b>	<b>76.9%</b>	<b>69.1%</b>	<b>71.0%</b>	<b>74.3%</b>

Source: AF/AFSC Crop Reporting Survey

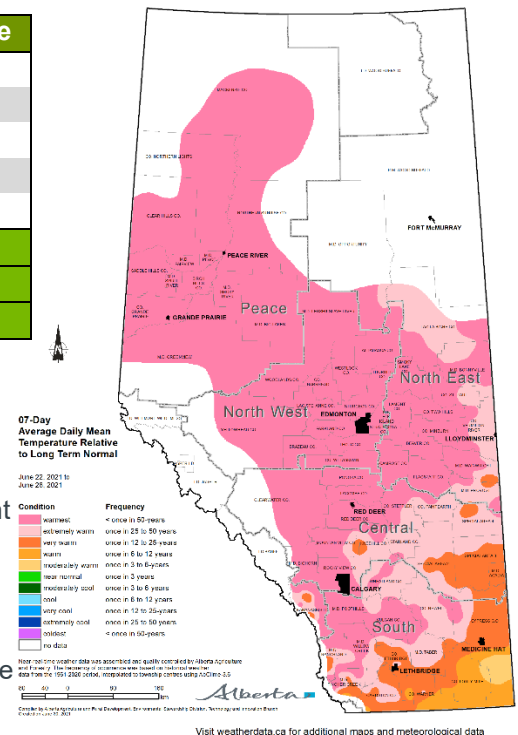
Hay harvest has begun with 28 per cent of dryland acres, and 46 per cent of irrigated hay now baled in Alberta. Dryland condition is rated 53 per cent good and 16 per cent excellent, with irrigated hay in better shape at 61 per cent good, with 8 per cent excellent. Yields are averaging 1.2 tons per acre on dryland, slightly behind the five-year average of 1.3 tons per acre. Irrigated yields are estimated at 2.1 tons per acre while the five-year average is 2.4. Both yields and conditions are lower in both South and Peace regions resulting from limited precipitation.

**Table 2: Surface Soil Moisture Ratings as of June 28, 2021**

	Poor	Fair	Good	Excellent	Excessive
South	38.1%	43.1%	17.3%	1.5%	---
Central	22.2%	19.6%	53.6%	4.6%	---
North East	4.8%	42.6%	50.3%	2.1%	0.2%
North West	24.6%	58.7%	16.7%	---	---
Peace	14.7%	43.3%	41.2%	0.8%	---
<b>Average</b>	<b>23.4%</b>	<b>38.7%</b>	<b>35.6%</b>	<b>2.2%</b>	<b>0.0%</b>
<b>5-year (2016-2020) Avg.</b>	<b>4.8%</b>	<b>19.7%</b>	<b>46.6%</b>	<b>24.3%</b>	<b>4.7%</b>
<b>10-year (2011-2020 Avg.)</b>	<b>7.6%</b>	<b>16.0%</b>	<b>42.7%</b>	<b>29.0%</b>	<b>4.7%</b>

Source: AF/AFSC Crop Reporting Survey

Soil moisture conditions have dropped from last week as a result of the extended period of hot, dry conditions around the province. Surface soil moisture (last week in brackets) is 23 (12) per cent rated as poor, 39 (28) per cent fair, 36 (47) per cent good, 2 (12) per cent excellent with 0 (1) per cent rated as excessive (Table 2). Sub-surface soil moisture (last week in brackets) is currently estimated at 16 (10) per cent poor, 35 (27) per cent fair, 41 (47) per cent good, and 8 (16) per cent excellent. The average daily mean temperatures for the week ending June 28 have been a once-in-50-year event for most of the province (see dark pink on Map).



## Regional Assessments:

### Region One: South (Strathmore, Lethbridge, Medicine Hat, Foremost)

- Crop conditions within the South region are estimated at 49 per cent good or excellent, and are noticeably lower than the five-year average of 72 per cent and 10-year average of 75 per cent. The extremely warm temperatures and lack of moisture are taking a toll on all dryland crops.
- Spring-seeded cereals are mid-way through the boot stage, with winter cereals now flowering. Well over half of the oilseed and pulse crops are in the rosette stage, with over 30 per cent starting to flower.
- Surface soil moisture ratings decreased by four points over the last week to 19 per cent rated good or excellent. Sub-surface soil moisture decreased by six points over last week to 23 per cent rating good or excellent.
- First-cut haying is underway with over 40 per cent of dryland acres and over half of irrigated acres now completed. Dryland yields (irrigated in parenthesis) are estimated at 0.9 (2.2) tons per acre and 54 (64) per cent rated good or excellent quality. Pasture growth (tame hay shown in parenthesis) is rated as 18 (20) per cent poor, 52 (48) per cent fair, 29 (30) good, and 1 (2) per cent excellent.

### Region Two: Central (Rimbey, Airdrie, Coronation, Oyen)

- Crop conditions in Central region are estimated at 77 per cent good or excellent, and on par with both the five-year and 10-year average. The extremely warm temperatures and lack of moisture are taking a toll on all dryland crops.
- Spring-seeded cereals are in the early stem elongation stage, with winter cereals now nicely into flowering. Oilseed and pulse crop development is variable, with the majority of acres in the rosette stages, rapidly moving into flowering.
- Surface soil moisture ratings decreased by 18 points over the last week to 58 per cent rated good or excellent. Sub-surface soil moisture decreased by 14 points over last week to 60 per cent rating good or excellent.
- First-cut haying is underway with over one third of dryland acres and over five per cent of irrigated acres now completed. Dryland yields (irrigated in parenthesis) are estimated at 1.6 (1.9) tons per acre and 89 (100) per cent rated good or excellent quality. Pasture growth (tame hay shown in parenthesis) is rated as 11 (11) per cent poor, 26 (27) per cent fair, 59 (54) good, and 4 (8) per cent excellent.

### **Region Three: North East (Smoky Lake, Vermilion, Camrose, Provost)**

- Crop conditions within the Central region are estimated at 84 per cent good or excellent, and on par with the five-year average of 85 per cent but behind the 10-year average of 77 per cent. The extremely warm temperatures and lack of moisture are taking a toll on all dryland crops.
- Spring-seeded cereals are in the early boot stage; while fall-seeded crops are now in the early milk stage. Canola has close to 70 per cent in the rosette stage, with peas close to 85 per cent in the rosette stage.
- Surface soil moisture ratings decreased by 29 points over the last week to 52 per cent rated good or excellent. Sub-surface soil moisture decreased by 13 points over last week to 80 per cent rating good or excellent.
- First-cut haying is just underway in the region with six per cent of dryland acres now completed. Dryland yields are estimated at 1.2 tons per acre and 93 per cent rated good or excellent quality. Pasture growth (tame hay shown in parenthesis) is rated as 6 (17) per cent poor, 32 (44) per cent fair, 55 (37) good, and 7 (2) per cent excellent.

### **Region Four: North West (Barrhead, Edmonton, Leduc, Drayton Valley, Athabasca)**

- Crop conditions within the North West region are estimated at 72 per cent good or excellent, and on par with the five-year average and slightly ahead of the 10-year average of 69 per cent. The extremely warm temperatures and lack of moisture are taking a toll on all dryland crops.
- Spring-seeded cereals are in the late stem elongation stage, while canola and peas are over 70 per cent in the rosette stage.
- Surface soil moisture ratings decreased by 80 points over the last week to 17 per cent rated good or excellent. Sub-surface soil moisture decreased by 51 points over last week to 46 per cent rating good or excellent.
- First-cut haying is over a quarter of dryland acres now completed. Dryland yields are estimated at 1.1 tons per acre and 72 per cent rated good or excellent quality. Pasture growth (tame hay shown in parenthesis) is rated as 3 (8) per cent poor, 58 (53) per cent fair, 37 (38) good, and 2 (1) per cent excellent.

### **Region Five: Peace (Fairview, Falher, Grande Prairie, Valleyview)**

- Crop conditions within the Peace region are estimated at 66 per cent good or excellent, lower than the five-year average of 70 per cent and 10-year average of 71 per cent. The extremely warm temperatures and lack of moisture are taking a toll on all dryland crops.
- Spring-seeded cereals are in the early stem elongation stage, while canola and peas are near 80 per cent in the rosette stage.
- Surface soil moisture ratings decreased by 10 points over the last week to 42 per cent rated good or excellent. Sub-surface soil moisture decreased by 5 points over last week to 47 per cent rating good or excellent.
- First-cut haying well underway with 20 per cent of dryland acres now completed. Dryland yields are estimated at 0.9 tons per acre and 43 per cent rated good or excellent quality. Pasture growth (tame hay shown in parenthesis) is rated as 18 (15) per cent poor, 43 (42) per cent fair, 37 (39) per cent good and 2(4) per cent excellent.

## **Contacts**

Agriculture Financial Services Corporation  
Business Risk Management Products Unit  
Lacombe, Alberta  
**July 2, 2021**

Jackie Sanden – Product Coordinator  
Ken Handford – Product Development Analyst  
Email: [MediaInquiry@afsc.ca](mailto:MediaInquiry@afsc.ca)

Note to Users: The contents of this document may not be used or reproduced without properly accrediting AFSC and Alberta Agriculture and Forestry, Intergovernmental and Trade Relations Branch, Statistics and Data Development Section